



PREMIER
COPPER PRODUCTS

MODEL NUMBER: HV-CAMPANA36-C2036BP1-TW

DESCRIPTION: Hand Hammered Copper Wall-Mounted Campana Range Hood with 1250 CFM Stainless Steel Insert.

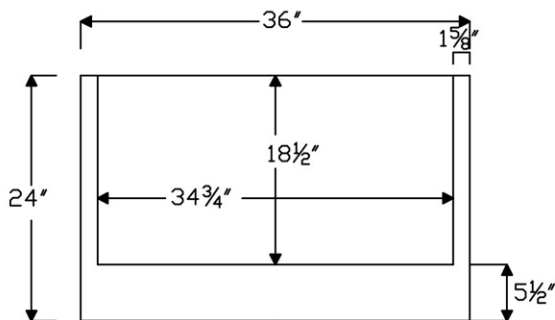
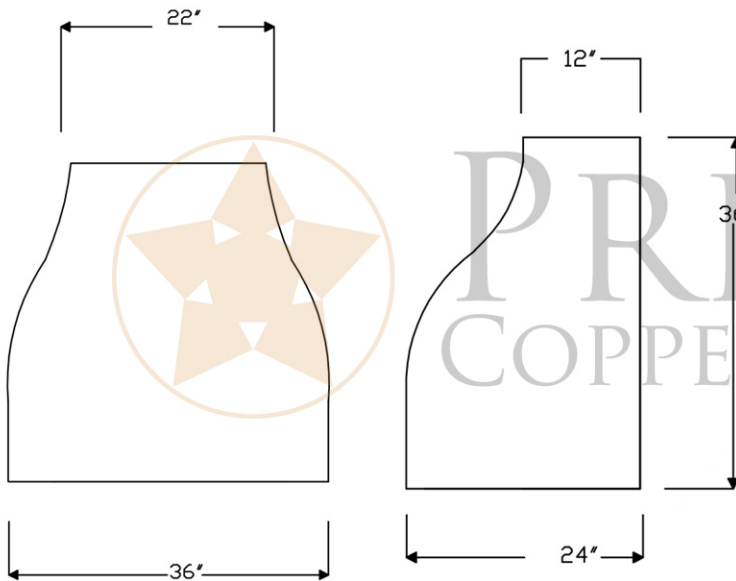
OUTER DIMENSION: 36" x 24" 36"

TOP DIMENSION: 22" x 12"

BOTTOM DIMENSION: 36" x 24"

FINISH: Oil Rubbed Bronze

PAGE 1 OF 2



THIS PRODUCT IS HAND CRAFTED AND SMALL VARIANCES MAY OCCUR.
DIMENSIONS MAY VARY UP TO 1/2".



PREMIER
COPPER PRODUCTS

MODEL NUMBER: HV-CAMPANA36-C2036BP1-TW

DESCRIPTION: Hand Hammered Copper Wall-Mounted
CAMPANA Range Hood with 1250 CFM Stainless Steel Insert.

Includes Powered Liner/Insert

1250 CFM, Twin Blowers, Variable Controls, 1.5 - 4.6 Sones

Two 7" Ducts

Lighting: Two 50 Watt Halogen Spots (PAR 20)(bulbs not included)

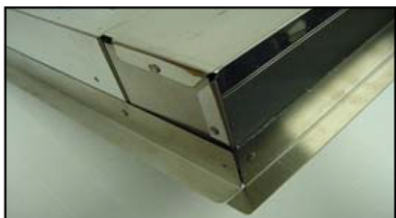
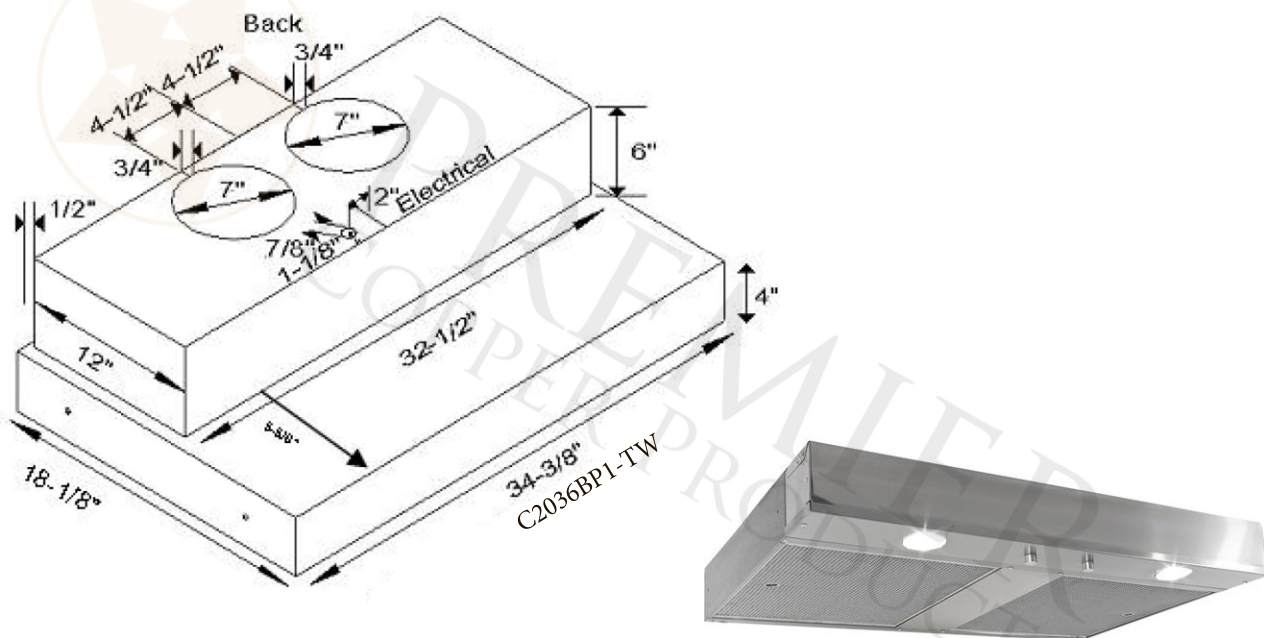
Lights located on front panel

Filter: Aluminum Mesh Filters

Insert Finish: Stainless Steel

PAGE 2 OF 2

POWERED LINER SPECIFICATIONS



3/4" Flange for perfect fit.



SEVEN YEAR, IN HOME, LIMITED WARRANTY ON INSERT, THE BEST IN THE INDUSTRY!

All dimensions on inserts are (+/-) 1/8" and are subject to change. Drawings are not to scale.