



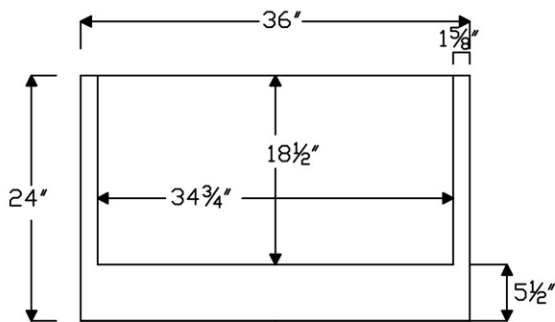
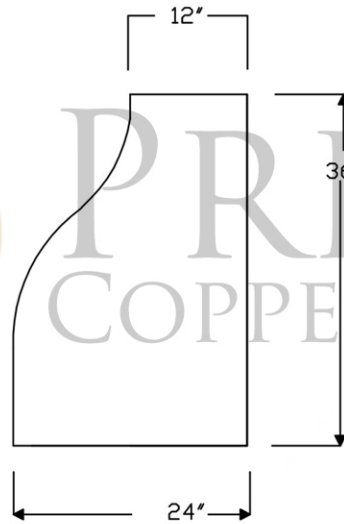
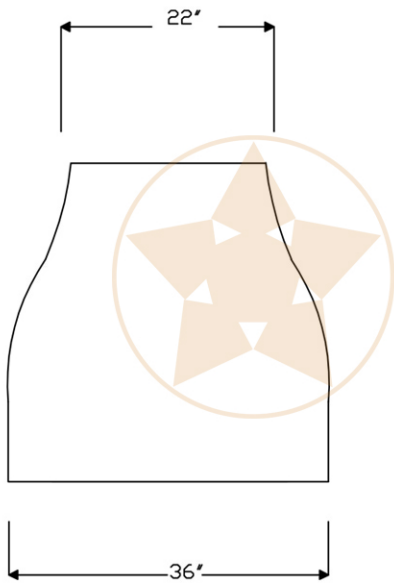
**DESCRIPTION:** Hand Hammered Copper Wall-Mounted Campana Range Hood with 735 CFM Stainless Steel Insert.

**OUTER DIMENSION:** 36" x 24" x 36"

**TOP DIMENSION:** 22" x 12"

**BOTTOM DIMENSION:** 36" x 24"

**FINISH:** Oil Rubbed Bronze



THIS PRODUCT IS HAND CRAFTED AND SMALL VARIANCES MAY OCCUR.  
DIMENSIONS MAY VARY UP TO 1/2".



Includes Powered Liner/Insert

735 CFM, Dual Blowers, Variable Controls, 1.5 - 4.6 Sones  
Single 7" Duct

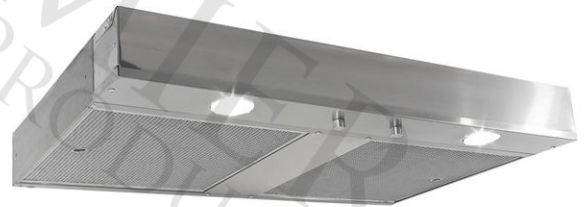
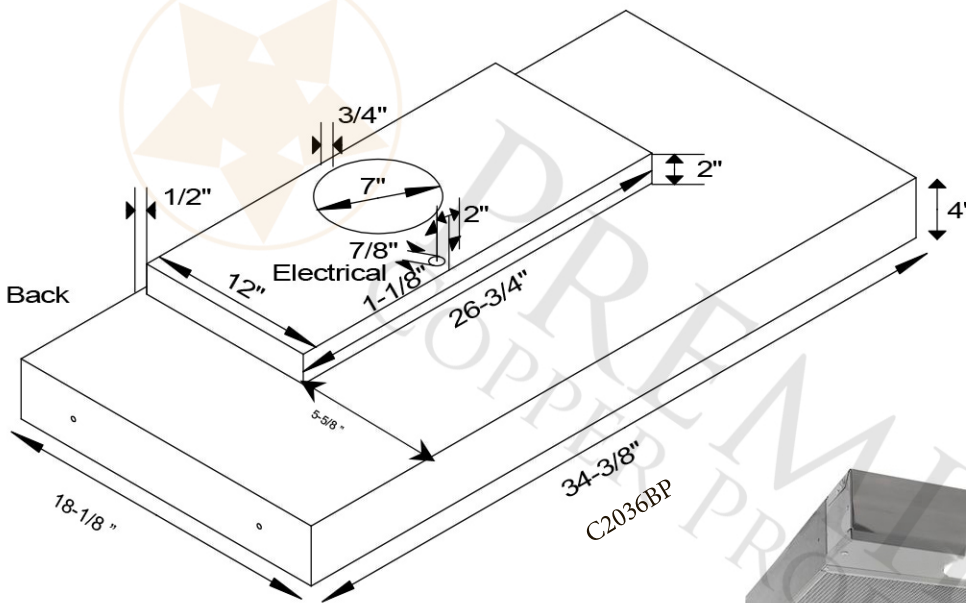
Lighting: Two 50 Watt Halogen Spots (PAR 20)(bulbs not included)

Lights located on front panel

Filter: Aluminum Mesh Filters

Insert Finish: Stainless Steel

**POWERED LINER SPECIFICATIONS**



3/4" Flange for perfect fit.



**SEVEN YEAR, IN HOME, LIMITED WARRANTY ON INSERT, THE BEST IN THE INDUSTRY!**

**All dimensions on inserts are (+/-) 1/8" and are subject to change. Drawings are not to scale.**