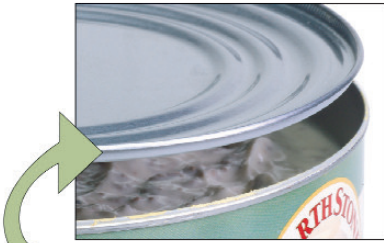




Only from Nemco!

The NEW CanPRO[®] Compact

Turns the old chore of opening cans completely around!



CanPRO leaves the circumference and lip of the lid intact, so the lid doesn't fall into the can.



NEW!
Gearless drive means no gear breakdown.

NEW!
Cutter design alleviates metal slivers.

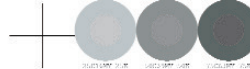
NEW!
Cutter module makes a quick change in a busy kitchen.



Under Clamp Mount
Model # 56050-2

\\repspedata\vol\2602\page 7 files -c R19\26022700.pdf Author: Sarapage Systems, Inc. Title: ExtractPage Creator: Sarapage Systems, Inc. Date: 2012-03-14 10:41:00 Page: 1 of 1
 2400.0 dpi (Screened Data File P08, R100-Read, Color-Read, Std-077, Siru-Read 800, Colors:) ABCD Color Scaling Percent: 100.00
 PS Version: 3005.102 80N Version: 8.5 Rev: 8-01-11 867, Ripped on Monday, March 15, 2012 8:42:17 PM
 Job: 2602





Smooth Operator

Say goodbye for good to the "lift, slam, puncture and rip" can-opening techniques that have been overstressing elbows for 100 years. The NEW redesigned CanPRO® Compact runs smarter and easier and longer than ever.

Think Outside the Can

Unlike conventional can openers that puncture and cut down into the lid from the top, Nemco's new CanPRO cuts from the side, along the lid's outer seam.

- The cutter never makes contact with the inside of the can.
- No metal shavings fall into the food.
- The lid comes off clean with no jagged edges.

Seams So Smooth

As a result of NEW engineering, the compression of the CanPRO's cutter has been carefully fine-tuned to improve performance.

- The cutter's new design won't penetrate past the first layer of metal on the lid's seam, alleviating the potential for producing metal slivers if the user overrotates the can.
- When the cutter runs its life cycle, it won't cut at all, clearly indicating it should be replaced.

Cut and Run...and Keep Running

The NEW CanPRO is specially designed to minimize downtime and costly repairs. Remove the cutter housing assembly and clean with a brush. Then simply clean the rest of the unit in the dishwasher or your 3-compartment sink.

- No more gear breakage or wear, thanks to a completely gearless handle.
- The cutter housing is a quick-change module—switch out a used for a new with just a pull of a pin. Keep an extra new modular cutter on hand, and you're never down.
- Stainless steel and aluminum nickel-plated components translate into a long, virtually maintenance-free life.

Model	Description
56050-1	CanPRO Compact, Permanent
56050-2	CanPRO Compact, Under Clamp
56050-3	CanPRO Compact, Security Model
56022A	Cutter Housing Assembly
56029	Cutter

Dimensions

Max. height	9½" (holds up to #10 can)
Handle radius	6"

Recommended handle turns per can size:

Can size	Diameter	Handle turns
#2	3"	3 revolutions
#5	5"	5 revolutions
#10	6"	6 revolutions

Note: Too many rotations—going beyond the point of initial cut—may produce metal slivers.

Replacement parts are available through Nemco's 24-hour Zip Program.



Can-locking feature
(holds up to #10 cans)—
easily orients and holds
the cutter to the lid.



**Stainless steel permanent
mount model**—screws into
the countertop. The security
model option (shown)
includes a locking capability.
(Lock not included.)



**Stainless steel
under clamp model**—
easily and securely affixes to
any counter up to 2¾" thick.



**Tough, lasting, precision-
ground stainless steel cutter**—
cuts up to 5,000 lids, and is
easy to replace.



**Separate cutter
housing assembly**—
When you purchase your
CanPRO, be sure to order
an extra, easy-to-replace
cutter housing assembly to
minimize downtime.



"Exceeding your expectations"

Nemco® Food Equipment, Ltd.
301 Meuse Argonne
Hicksville, Ohio 43526
1.800.782.6761
419.542.7751
419.542.6690, fax
www.nemcofoodequip.com
Printed 3/12. Printed in the U.S.A.

\\wexmacedata\j002\vol\26032\page 5 files -c R19\26032\page 5.pdf Author: Sarapage Systems, Inc. Title: Extract\302\page 5 Creator: Sarapage Systems, Inc. Modifiable: 2/26/2012 16:08:00 File Size: 175845 bytes Date of Birth: 2/26/2012 16:08:00 Page Count: 5
 24x0.0 dpi (Screened Data File P08, R19) Color-Ready, Color-Ready, Color-Ready
 PS Version: 300.5.102 KON Version: 8.5 Rev: 8-01 1 887, Ripped on Monday, March 15, 2012 8:42:26 PM
 Job: 346, 31

