

phere

is everything...

At Mars, atmosphere is everything.

It's the comfortable, sanitary and energy-efficient environments that we create. It's our friendly service and how we care for our customers. And it's the way our products benefit your employees, visitors and patrons every day.

With over 50 years in business, **Mars Air Systems** is the international leader in high quality air curtains. Utilizing industry-leading tools and services, Mars provides architects, engineers, food service consultants and other specifiers with the most comprehensive air curtain solutions, while giving building owners the peace of mind of a reliable product and dedicated support. Through an internal culture committed to making our customers' jobs easier and backed by our dependable products, Mars is the industry's most respected name.

Mars Air Systems helps you breathe easier.



14716 South Broadway St. - Gardena, California 90248

Call Us Toll Free: 800-421-1266



MARSAIR.COM
atmosphere is everything

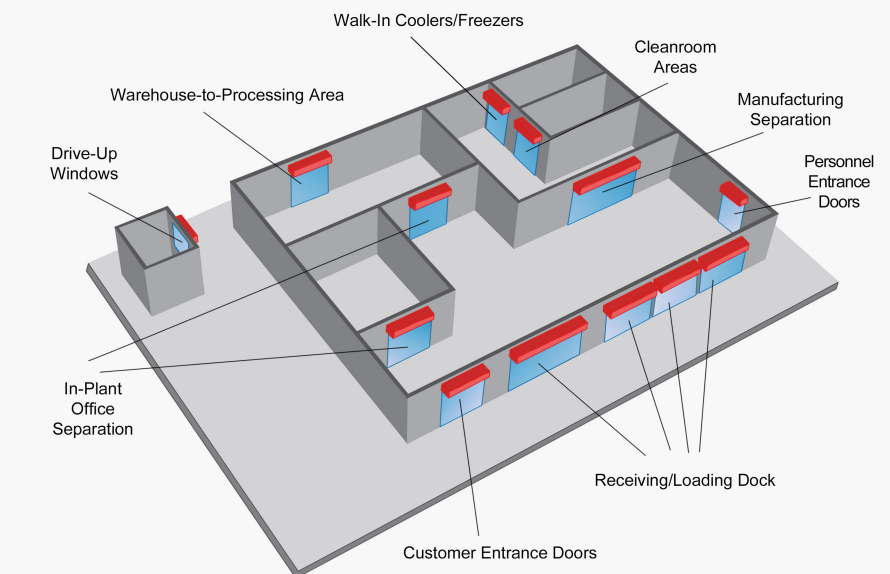


our air curtains help you breathe easier

atmos



Mars Air... Over Every Door



Our Air Curtains

Air Curtains maintain air temperature by creating a "barrier" that keeps outside temperatures from affecting the internal environment and lower energy usage and costs representing a truly sustainable and LEED credit-approved option for your HVAC needs. Additionally, an air curtain maintains air quality by repelling dust, flying insects, and other outside contaminants.

Solutions

Air Curtains installed over operational doors and pass-thru windows offer solutions for a wide variety of applications, both commercial and industrial: from manufacturing plants, warehouses and convention centers to buy-in-bulk retail stores, restaurants and sports complexes.

AIR CURTAIN BENEFITS

- ENVIRONMENTAL SEPARATION
- ENERGY SAVINGS
- PRODUCT QUALITY
- SANITATION BARRIER AGAINST AIR BORNE CONTAMINANTS
- FLYING INSECT CONTROL



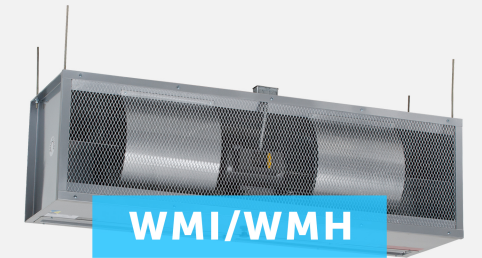
STD 2

- INSTALLATION HEIGHTS:**
- FLYING INSECT CONTROL UP TO 8' (CUSTOMER ENTRANCES/SMALL RECEIVING DOORS) TAND TEMPERATURE CONTROL UP TO 10'
 - PROPRIETARY MOTOR FAN ASSEMBLY FOR EASY INSTALLATION & MAINTENANCE
 - LOW PROFILE DESIGN
 - HEAT OPTIONS AVAILABLE – ELECTRIC, STEAM, HOT WATER
 - STANDARD COLOR – OBSIDIAN BLACK
 - FREIGHT ALLOWED WITHIN CONTINENTAL US



HV 2

- INSTALLATION HEIGHTS:**
- FLYING INSECT CONTROL UP TO 10' / TEMPERATURE CONTROL UP TO 12'
 - SLIM AESTHETIC DESIGN
 - HEAT OPTIONS AVAILABLE – ELECTRIC, STEAM, HOT WATER
 - STANDARD COLOR – TITANIUM SILVER
 - FREIGHT ALLOWED WITHIN CONTINENTAL US



WMI/WMH

- INSTALLATION HEIGHTS:**
- TEMPERATURE CONTROL 12' TO 16' / WIND RESISTANCE UP TO 15 MPH
 - DIRECT DRIVE UNIT FOR HEAVY INDUSTRIAL PROJECTS
 - AMCA RATED MODELS
 - HEAT OPTIONS AVAILABLE – HOT WATER, STEAM, GAS
 - STANDARD COLOR – TITANIUM SILVER
 - FREIGHT NOT INCLUDED



LPV 2

- INSTALLATION HEIGHTS:**
- FLYING INSECT CONTROL UP TO 7' / TEMPERATURE CONTROL UP TO 8'
 - VARIABLE SPEED MOTOR AND SWITCH
 - SLIM AESTHETIC DESIGN
 - HEAT OPTIONS AVAILABLE – ELECTRIC, STEAM, HOT WATER
 - STANDARD COLOR – OBSIDIAN BLACK
 - FREIGHT ALLOWED WITHIN CONTINENTAL US



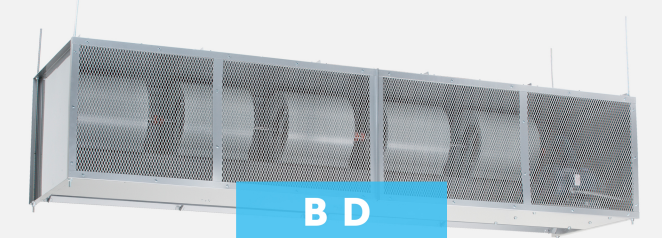
N 2

- INSTALLATION HEIGHTS:**
- ETL CERTIFICATION TO ANSI/NSF STANDARDS
 - CUSTOMER ENTRANCES UP TO 7'
 - WASHABLE ALUMINUM MESH FILTER – OPTIONAL
 - HEAT OPTIONS – NOT AVAILABLE
 - STANDARD COLOR – OBSIDIAN BLACK
 - FREIGHT ALLOWED WITHIN CONTINENTAL US



NH 2

- INSTALLATION HEIGHTS:**
- ETL CERTIFICATION TO ANSI/NSF STANDARDS
 - RECEIVING DOORS UP TO 8'
 - WASHABLE ALUMINUM MESH FILTER – OPTIONAL
 - HEAT OPTIONS – NOT AVAILABLE
 - STANDARD COLOR – TITANIUM SILVER
 - FREIGHT ALLOWED WITHIN CONTINENTAL US



BD

- INSTALLATION HEIGHTS:**
- TEMPERATURE SEPARATION 12' TO 30' / WIND RESISTANCE UP TO 30 MPH
 - HOUSING PROFILE – 28" X 36"
 - BELT DRIVEN UNIT FOR HEAVY INDUSTRIAL PROJECTS
 - HEAVY DUTY TEFC MOTORS
 - HEAT OPTIONS AVAILABLE – HOT WATER, STEAM, GAS
 - STANDARD COLOR – TITANIUM SILVER
 - FREIGHT NOT INCLUDED



LPN 2

- INSTALLATION HEIGHTS:**
- ETL CERTIFICATION TO ANSI/NSF STANDARDS
 - PASS THROUGH/DRIVE-UP/UP TO 5' / CUSTOMER ENTRANCES UP TO 7'
 - WASHABLE ALUMINUM MESH FILTER – OPTIONAL
 - HEAT OPTIONS – NOT AVAILABLE
 - STANDARD COLOR – OBSIDIAN BLACK
 - FREIGHT ALLOWED WITHIN CONTINENTAL US



PH

- INSTALLATION HEIGHTS:**
- PH10 TEMPERATURE CONTROL UP TO 10' / PH12 TEMPERATURE CONTROL UP TO 12'
 - RECESSED MOUNTED IN CEILING FOR INVISIBLE COVERAGE
 - UTILIZED IN PREMIUM DESIGN PROJECTS
 - DURABLE ALUMINUM CONSTRUCTION
 - HEAT OPTIONS AVAILABLE – ELECTRIC, STEAM, HOT WATER
 - STANDARD COLOR – PEARL WHITE
 - FREIGHT ALLOWED WITHIN CONTINENTAL US



EP 2

- INSTALLATION HEIGHTS:**
- FLYING INSECT CONTROL UP TO 14' / TEMPERATURE CONTROL UP TO 16'
 - PROPRIETARY MOTOR FAN ASSEMBLY FOR EASY INSTALLATION & MAINTENANCE
 - BEST VALUE FOR LARGE-SIZED WAREHOUSE DOORS
 - HEAT OPTIONS AVAILABLE – STEAM, HOT WATER, GAS
 - STANDARD COLOR – TITANIUM SILVER
 - FREIGHT ALLOWED WITHIN CONTINENTAL US (EXCEPT GAS FIRED)



FOR MORE INFORMATION
on our product lines and how Mars Air Systems
can help with your specific needs, visit us at

www.marsair.com