



› FEATURES

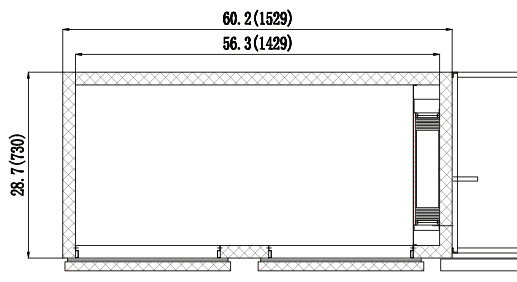
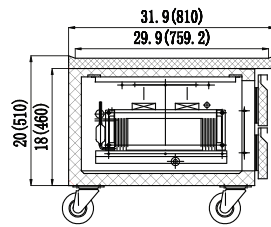
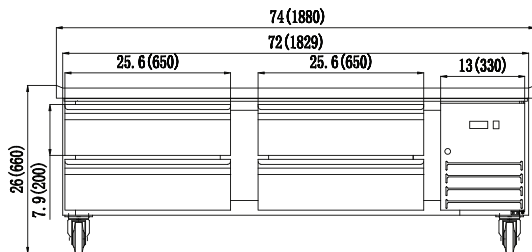
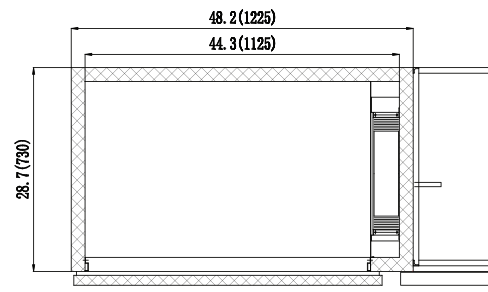
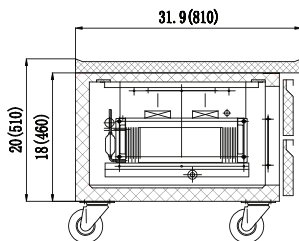
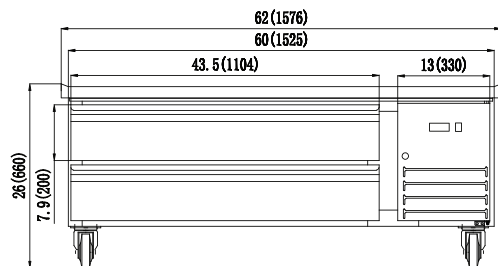
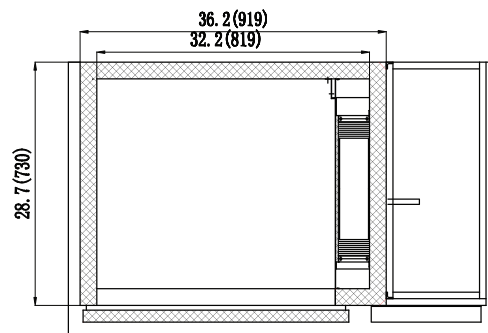
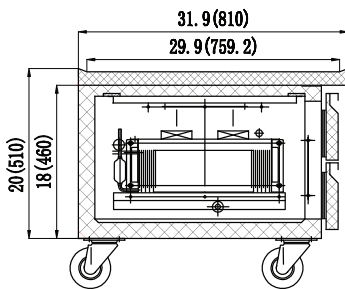
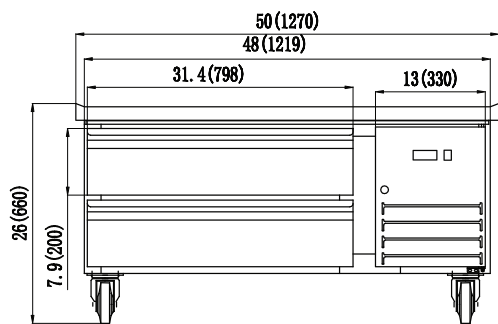
- CFC free refrigerant and foam insulation
- Electronic thermostat and digital LED temperature display for accurate control and easy reading
- Easy to mount 4" casters (two lockable in front) are standard with all units
- Magnetic gasket can be replaced without any tools
- Stainless steel framework construction
- Auto defrosting and auto evaporation of condensation water
- 4" PC pans not included. Note: this unit cannot accommodate 6" PC pans.
- Raised marine edge contains spills
- Exterior: 430 stainless steel top, front & sides. Aluminum back panel.
- Interior: Aluminum with a 304 stainless steel floor
- Temperature: 33 to 41°F / 0.5 to 5°C
- Electrical: 115/60/1 with NEMA 5-15P plug

› SPECIFICATIONS

MODEL	DRAWERS	EXT. DIMENSIONS W x D x H ⁽ⁱⁿ⁾	AMPS	H.P.	SHIP WEIGHT
KCBR-48	2	50 x 31.9 x 26	5.8	1/3	162 lbs
KCBR-60	2	62 x 31.9 x 26	5.8	1/3	200 lbs
KCBR-72	4	74 x 31.9 x 26	5.8	1/3	232 lbs

See page 34 for pan configurations.

CERTIFIED TO ANSI/NSF-7 STANDARDS



Dimensions in inches (mm)