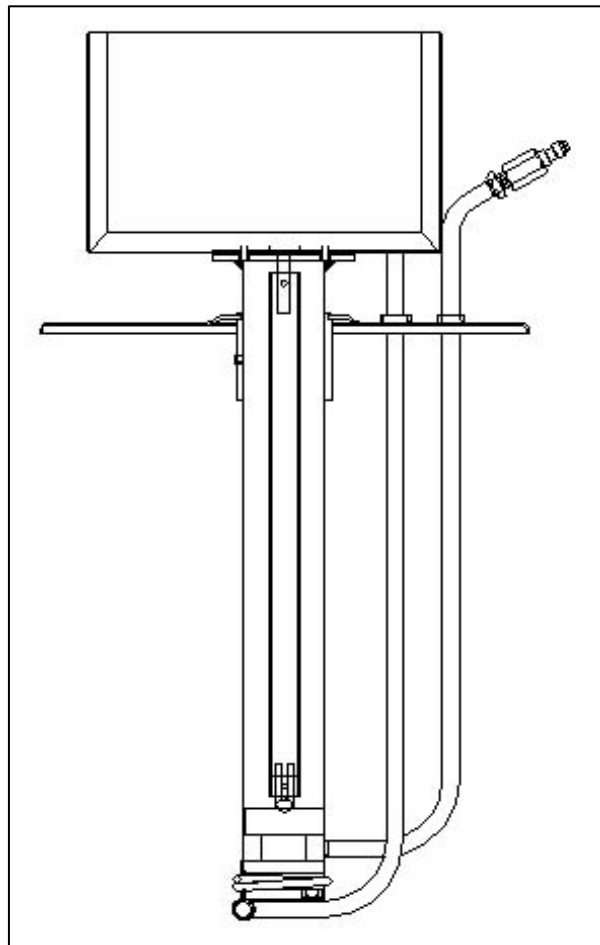


Bucket Pump With Teach-Me Timer

Instruction Manual

Models: 2114E & 2114ED

For Machines Manufactured After March 2009



 **GOLD MEDAL**®
FUNFOOD EQUIPMENT & SUPPLIES

Cincinnati, OH 45241 USA

Safety Precautions



DANGER

Machine must be properly grounded to prevent electrical shock to personnel. Do not immerse the equipment in water. Always unplug the equipment before cleaning or servicing.



WARNING

Any alterations to this equipment will void the warranty and may cause a dangerous situation. NEVER make alterations to the equipment.
Make sure all machine switches are in the OFF position before plugging the equipment into a receptacle.



WARNING

Adequate eye protection must be used when servicing this equipment to prevent the possibility of injury.



CAUTION

This equipment is designed and sold for commercial use only. This equipment is not to be used by the consumer in home use. Do not allow direct contact of this equipment by the public when used in food service locations. Only personnel trained and experienced in the equipment operation may operate this equipment.
Carefully read all installation instructions before operating the equipment.



CAUTION

This machine is NOT to be operated by minors. Minors are classified as anyone under the age 18.

NOTE

The information, specifications and illustrations contained in this manual represent the latest data available at time of publication. Right is reserved to make changes as required at the discretion of Gold Medal Products Company without notice.

INTRODUCTION

This manual provides instruction for installation and operation of the Models 2114E and 2114ED – manufactured after March of 2009.

The unit you have purchased is a quality product that should give you years of trouble-free operation if used correctly, and properly maintained. Take a few minutes to read this instruction manual - and make sure all users are instructed in the proper operation. The warranty does not cover damage that occurs in transit, or damage caused by abuse or consequential damage due to the operation of this machine, since it is beyond our control.

INSTALLATION

CHECKING SHIPMENTS

Carefully remove your new bucket pump from the corrugated carton. Check thoroughly for any damage, which may have occurred during transit. Damage claims should be filed immediately with the transportation company.


ELECTRICAL REQUIREMENTS

Model number 2114E:

120 Volts / 60 Hz

Model number 2114ED:

120 Volts / 60 Hz

	⚠ DANGER
	Machine MUST be properly grounded to prevent electrical shock to personnel. Do NOT immerse the equipment in water. Do NOT use excessive water for cleaning. Unplug your machine before cleaning or servicing.

OPERATING INSTRUCTIONS

FINAL PREPARATIONS

Your new Bucket Pump was adjusted, inspected and tested before it left the factory, and is ready to operate with some fine adjustment to the volume of oil delivered to your popper (see adjustment instructions on the following page).

NOTE: We recommend pre-melting oil in the bucket with Gold Medal's HOT WAND, catalog #2018, before inserting your new bucket pump to prevent the possibility of damage to the heat element.

INSTALLATION

1. Place your oil pump in a pre-melted bucket of oil.
2. Connect the plastic oil delivery tube (located in your popper) to the quick disconnect (located on your oil pump) using the hose clamp supplied with your popcorn machine.
3. Connect the power supply cord (located under your popper) to the disconnect plug on your oil pump. **NOTE:** Volume measurements should be taken from the oil delivery tube located in your existing popper above the kettle.

HIGH HEAT

1. Turn on the "OIL SYSTEM MASTER SWITCH" located on the switch panel in your popper.
2. The High Heat Cycle is factory set at 20 minutes.
3. To start the High Heat Cycle, press the "HEAT" button.

PUMP CYCLE

1. The oil quantity is factory set at approximately 4 ounces (120 ml). You will need to set the volume of oil to your corn charge.
2. With a measuring cup under the tube in the ceiling of the popper over the kettle, set the quantity to your desired ratio (30%). See chart below.
3. Allow oil to drain completely before rechecking oil quantity.

Raw Corn Charge	Oil Charge
12 Oz. (355 ml)	3.5 Oz. (103 ml)
14 Oz. (414 ml)	4 Oz. (120 ml)
16 Oz. (473 ml)	5.3 Oz. (155 ml)
20 Oz. (591 ml)	6.6 Oz. (195 ml)
28 Oz. (828 ml)	8.4 Oz. (250 ml)
32 Oz. (946 ml)	9.6 Oz. (285 ml)
36 Oz. (1065 ml)	12 Oz. (355 ml)
48 Oz. (1420 ml)	14.5 Oz. (450 ml)
52 Oz. (1538 ml)	16 Oz. (470 ml)

E-Z SET TIMER OPERATING INSTRUCTIONS

Program Mode:

This machine is equipped with a programmable timer for setting the amount of oil needed for popping popcorn.

To put the pump into program mode, hold the *Oil Dispense* push button down, while turning on the *Oil System Master* switch. Continue to hold the *Oil Dispense* push button down for 5 seconds. The oil light will start to blink off and on indicating that the timer is in the program mode. **(See note below.)** Hold a cup under the oil line, then use the manual mode of operation to prime the oil line. After priming the oil line, use a measuring cup and the automatic mode of operation to set the correct oil amount.

Note: If your machine is not equipped with a square, lighted rocker switch, no blinking light will be present.

1. Automatic Operation

When in the program mode press and release the oil *Dispense* switch to start the oil flowing. When the correct amount of oil has been dispensed into the measuring cup push the oil *Dispense* switch to stop the oil flow. The oil amount can be “topped off” by pushing the oil *Dispense* switch on/off as many times as needed to finalize the oil amount. Turning the *Oil System Master* switch off and then back on puts the unit in the regular mode. The unit will now dispense the “programmed” amount of oil when the oil *Dispense* switch is pushed. The oil light will light only when the oil pump is on.

2. Manual Operation

When in the program mode immediately turn off the *Oil System Master* switch. Turning the *Oil System Master* back on puts the timer in the manual mode of operation. The unit will now dispense oil only while the oil *Dispense* switch is pushed.

NOTE:

The model 2114ED is a dual oil timer. Select *salt popping* to program the salt oil time. Select *sweet popping* to program the sweet oil time.

For Flexi-Pop machines select one of the corn amounts, program and then select the second corn amount and program.

Note: The model 2114ED CANNOT be used as a replacement for the model 2114D. See attached service bulletin, on page 11 of this manual, for further instruction.

CLEANING INSTRUCTIONS

Sanitizing Instructions


Your Bucket Pump Model #2114E /2114ED can be spot cleaned by wiping oil residue with a dry towel, then wiping with another towel moistened with mild soap and warm water.

To thoroughly clean pump, disengage the connector from the oil pump and place pump in a pail of cleaning solution. Mix the solution (KAY-5 Sanitizer/Cleaner solution) to recommended specifications as noted on the solution instructions. Cycle the pump to flush the system. Make sure you have a container under the discharge tube to catch this solution. Change to a bucket of clean hot water and cycle the pump again to flush the soapy solution from the system. Reinstall the connector to the oil pump and repeat the start-up procedure.

MAINTENANCE INSTRUCTIONS

	⚠ DANGER
	Improper installation, adjustment, alteration, service or maintenance can cause property damage, injury, or death. Read the Installation, Operating, and Maintenance Instructions thoroughly before installing or servicing this equipment.

	⚠ WARNING
	Adequate eye protection must be used when servicing this equipment to prevent the possibility of injury.

	⚠ CAUTION
	THE FOLLOWING SECTIONS OF THIS MANUAL ARE INTENDED ONLY FOR QUALIFIED SERVICE PERSONNEL WHO ARE FAMILIAR WITH ELECTRICAL EQUIPMENT. THESE ARE NOT INTENDED FOR THE OPERATOR.

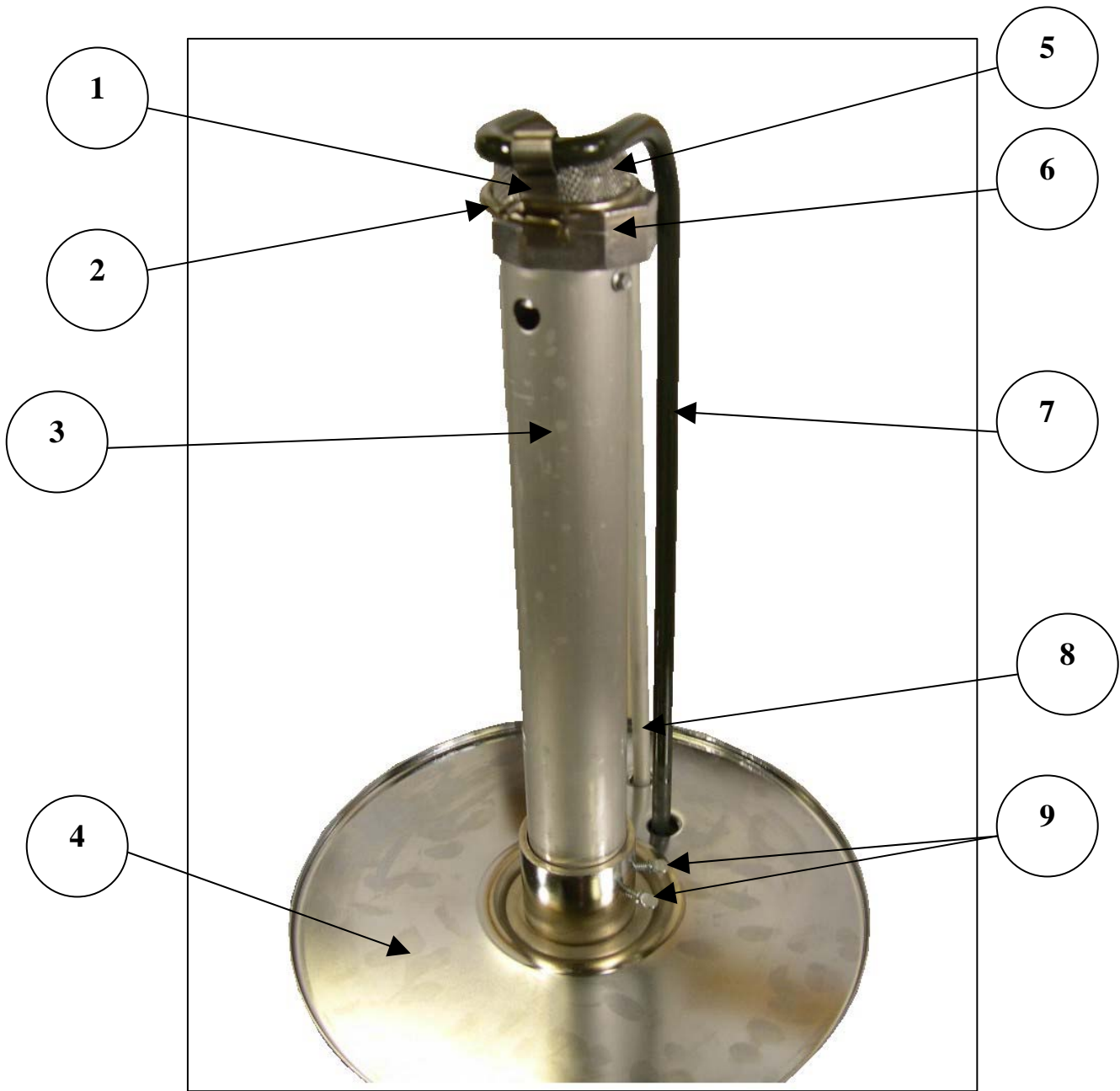
ORDERING SPARE PARTS

1. Identify the desired part by checking it against the photos, illustrations, and/or the parts list.
2. When ordering, please include part number, part name, and quantity desired.
3. Please include your model name, serial number, and date of manufacture (located on the machine nameplate) with your order.
4. Address all parts orders to:

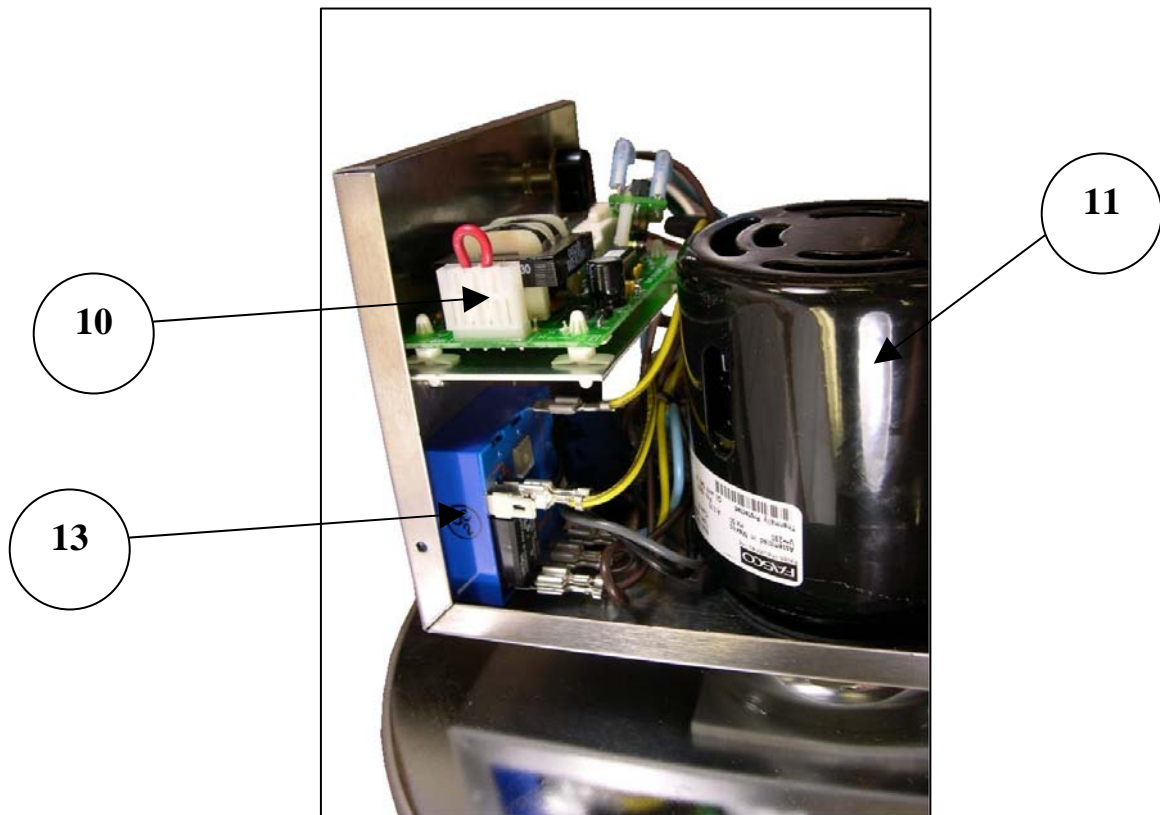
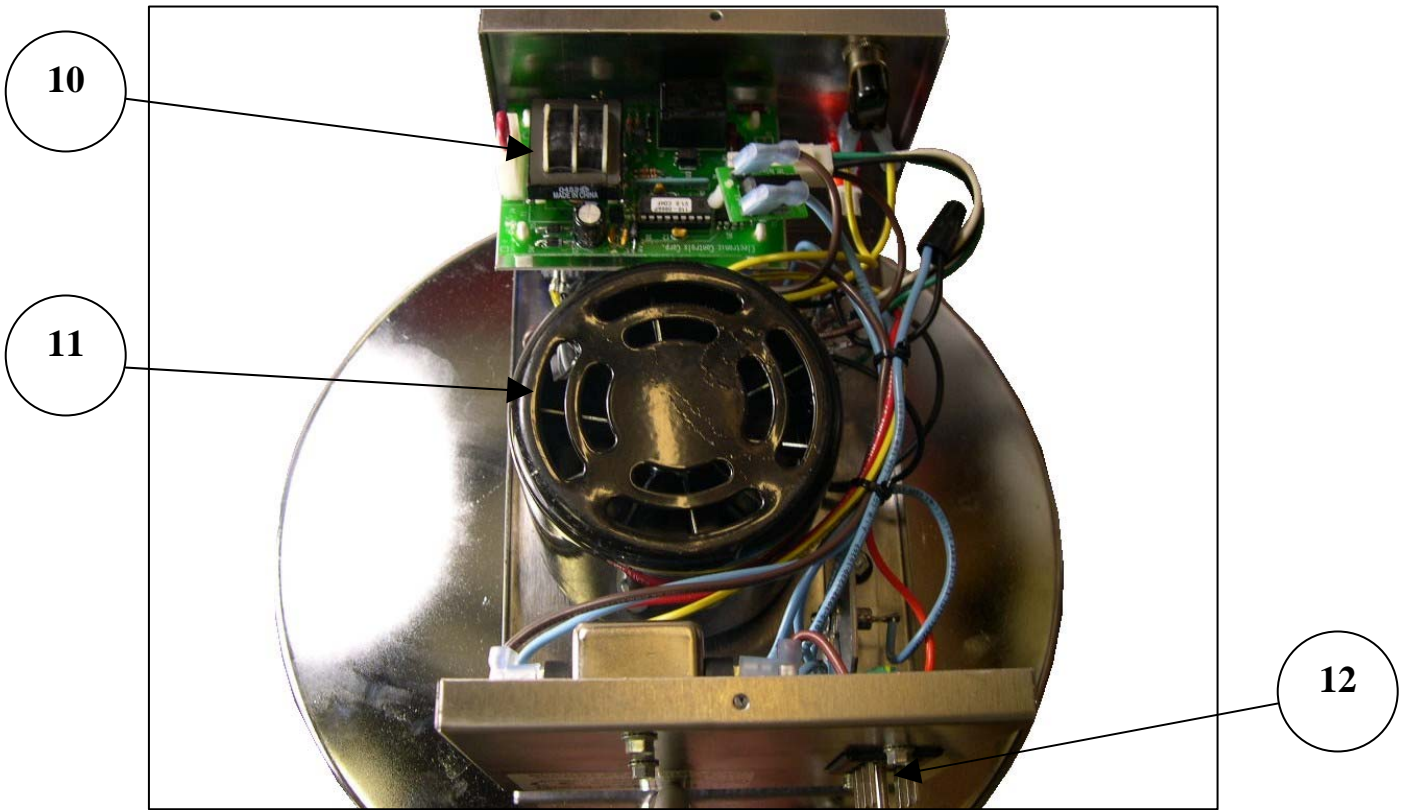
Parts Department
Gold Medal Products Co.
10700 Medallion Drive
Cincinnati, Ohio 45241-4807
(800) 543-0862
(513) 769-7676
Fax: (513) 769-8500
E-mail: info@gmpopcorn.com

or, place orders online at:
Web Page: www.gmpopcorn.com

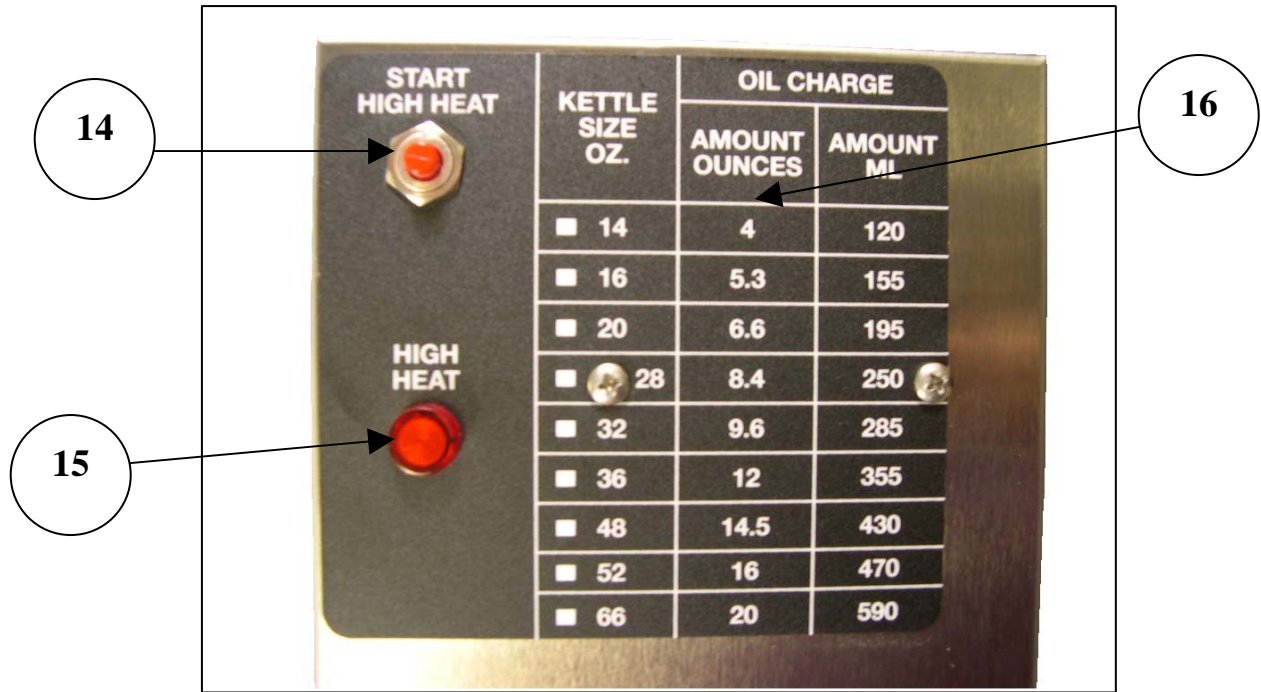
Parts Breakdown – Bottom View



Parts Breakdown – Top View



Parts Breakdown – Top View Continued



Parts List – Models: 2114E & 2114ED

Item No.	Part No.	Description	Quantity
1	79017	Element Retainer	1
2	79018	Clamp, Filter Screen	1
3	79023	Pump Mounting Tube	1
4	79030	Bucket Lid Assy.	1
5	79016	Filter Screen	1
6	79001	Pump Assy.	1
7	79002	Heat Element	1
8	79015	Oil Delivery Tube	1
9	76105	Thumb Screws	2
10	48732	Timer, Dual Teach - 120V	1
11	79006	Pump Motor	1
12	79004	Cinch Plug	1
13	55047	Timer, 20 Minute	1
14	41031	Switch, Oil Pump	1
15	41033	Pilot Light - 120V Red	1
16	79090	High Heat Label	1
*	79005	Pump Motor Gasket	1
*	79011	Drive Shaft	1
*	79019	Drive Shaft Bushing (Motor End)	1
*	79020	Drive Shaft Bushing (Pump End)	1
*	89087	240V Transient Filter	1

* Denotes items not shown.

GOLD MEDAL PRODUCTS COMPANY

10700 Medallion Drive
Cincinnati, Ohio 45241-4807
U.S.A.

Phone: (513) 769-7676
Fax: (513) 769-8811

FAX MESSAGE - SERVICE BULLETIN -0110 **Date Issued – *March 9, 2009*** ***Model(s) Affected- 2114 & 2114D***

The **2114** and **2114D** bucket pumps have been replaced by the **2114E** and **2114ED** bucket pumps.

The 2114E & 2114ED pumps have the teach timer with a fixed 20 minute high heat timer.

The 2114E is a direct replacement for the 2114 pump. (and the 2257 pump)

The 2114ED pump used with the flexi-pop and salt/sweet model machines is **not** a direct replacement for the 2114D pumps. If a customer requests a 2114D pump it will have to be made; save the remaining inventory for the 2114D.

List of new/old parts; where they are used.

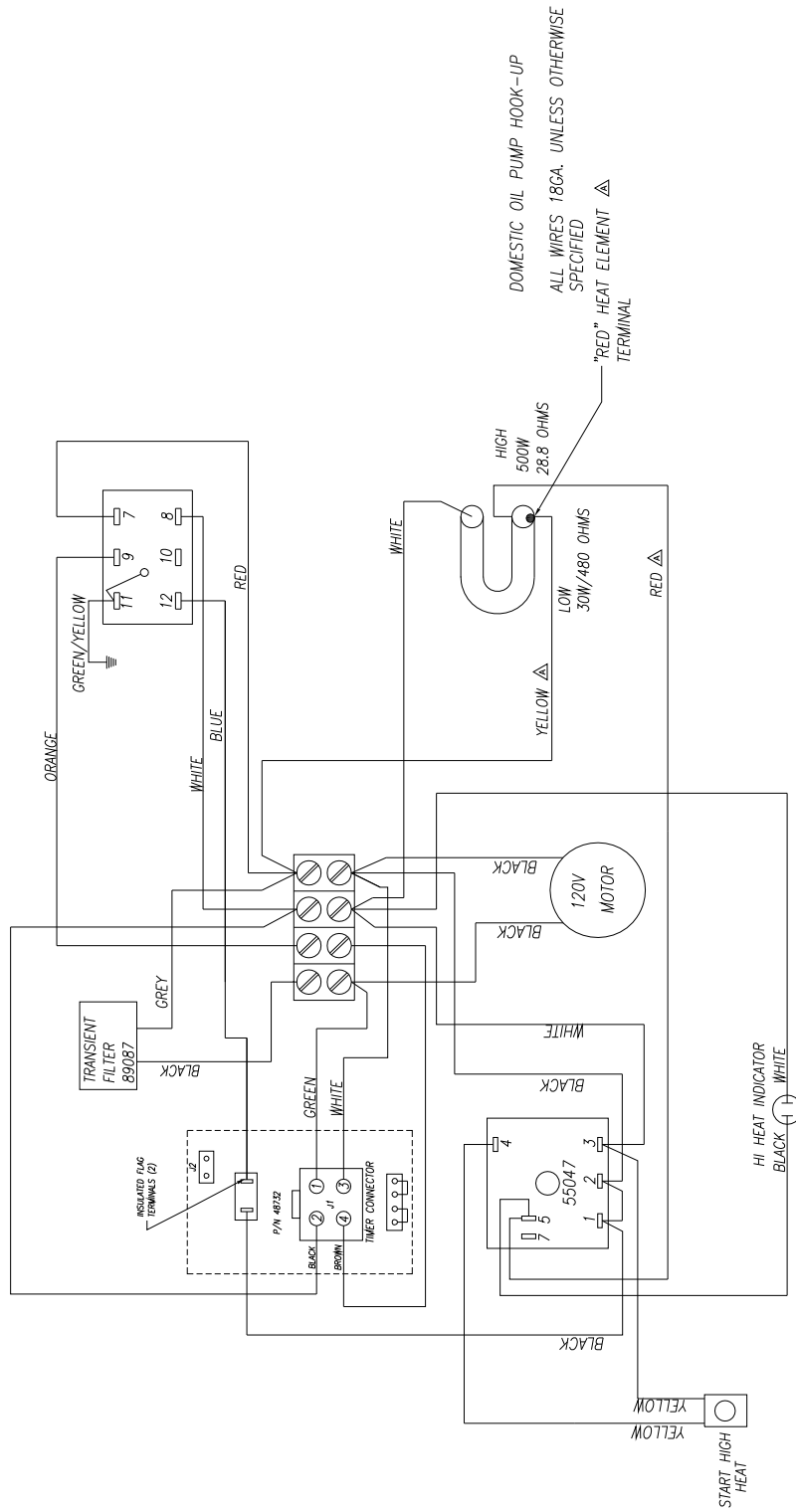
P/N	Description	2114	2114D	2114E	2114ED
79063EX	Junction Box	X	X		
79078	Dual Timer Assy	X	X		
79087	Decal for switches	X	X		
79050	Decal refer to manual	X	X		
79089	Junction Box			X	X
79135	Bracket, timer			X	X
79090	Decal for switches			X	X
45098	Terminal Block			X	X
48732	Teach timer			X	X
55017	Decal teach instructions			X	X
55047	Timer, 20 minute			X	X
48733	Relay SPDT				X
48773	Receptacle				X
79062EX	Junction box cover		X		
79140	SS Timer		X		
79141	Timer socket		X		
79159	Timer clips		X		
79279EX	Bracket, timer		X		

Wiring diagrams:

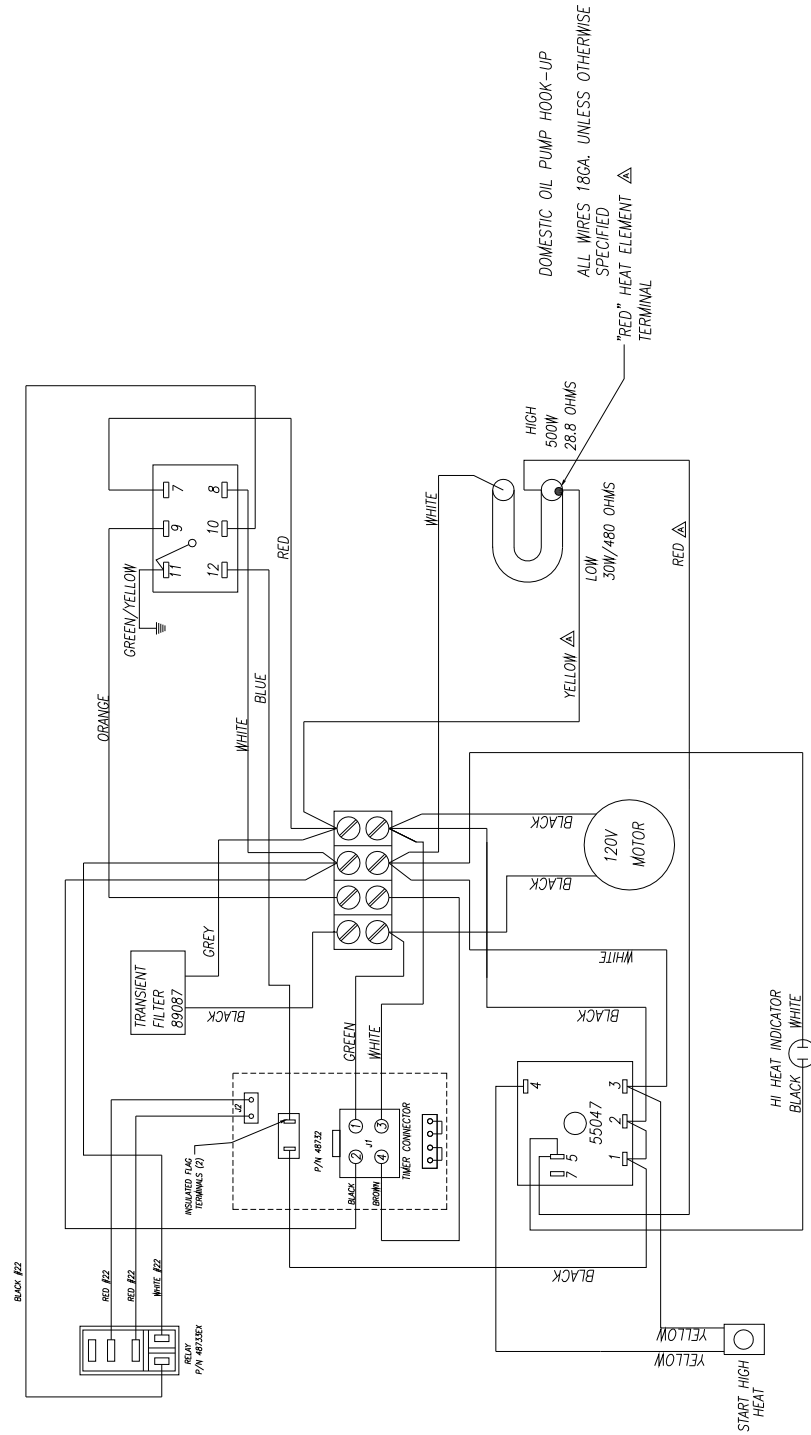
2114 B-11415S2
2114D B-14453S2
2114E B-11415S3
2114ED B-14415S4

If you have any questions, please feel free to call Technical Service at Gold Medal.

Electrical Schematic – Model 2114E



Electrical Schematic – Model 2114ED



WARRANTY

WE WARRANT to the original purchaser the Gold Medal equipment sold by us to be free from defects in material or workmanship under normal use and service. Our obligation under this warranty shall be limited to the repair or replacement of any defective part for a period of six (6) months from the date of sale to the Original Purchaser with regard to labor and two (2) years with regard to parts and does not cover damage to the equipment caused by accident, alteration, improper use, voltage, abuse, or failure to follow instructions.

THIS WARRANTY IS IN LIEU OF ALL OTHER WARRANTIES EXPRESSED OR IMPLIED, AND OF ALL OTHER OBLIGATIONS OR LIABILITIES ON OUR PART, INCLUDING THE IMPLIED WARRANTY OF MERCHANTABILITY. THERE ARE NO WARRANTIES WHICH EXTEND BEYOND THE DESCRIPTION ON THE FACE HEREOF. We neither assume, nor authorize any other person to assume for us, any other obligation or liability in connection with the sale of said GOLD MEDAL equipment or any part thereof.

The term "Original Purchaser" as used in this warranty shall be deemed to mean that person, firm, association, or corporation who was billed by the GOLD MEDAL PRODUCTS COMPANY, or their authorized distributor for the equipment.

THIS WARRANTY HAS NO EFFECT AND IS VOID UNLESS THE ORIGINAL PURCHASER FIRST CALLS GOLD MEDAL PRODUCTS COMPANY AT 1-800-543-0862 TO DISCUSS WITH OUR SERVICE REPRESENTATIVE THE EQUIPMENT PROBLEM, AND, IF NECESSARY, FOR INSTRUCTIONS CONCERNING THE REPAIR OR REPLACEMENT OF PARTS.



GOLD MEDAL PRODUCTS COMPANY

10700 Medallion Drive

Cincinnati, Ohio 45241-4807 USA

www.gmpopcorn.com

Phone: 1-800-543-0862

Fax: 1-800-542-1496

© The text, descriptions, graphics and other material in this publication are the proprietary and exclusive property of Gold Medal Products Company and shall not be used, copied, reproduced, reprinted or published in any fashion, including website display, without its express written consent.