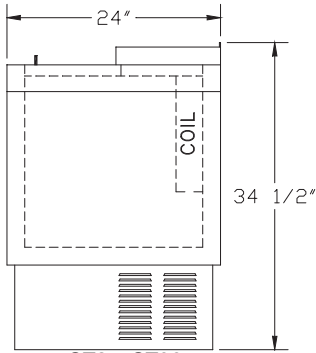


SLIDE TOP COOLERS



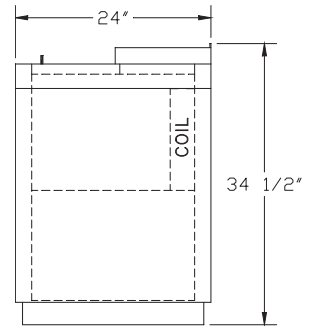
ST24, ST36
Side Elevation



ST24-SF
with optional door locks



ST72-BG
with optional door locks



ST48, ST72, ST96
Side Elevation

GALVANIZED STEEL INTERIOR WITH STAINLESS STEEL FLOOR MODELS

BLACK VINYL-CLAD MODEL	STAINLESS FRONT & SIDES MODEL	ALL STAINLESS EXTERIOR MODEL	LENGTH	DIVIDER RACKS	CASE CAP. BOTTLES	WGT
ST24-BG	ST24-SFG	ST24-SG	24"	1	4.83	200#
ST36-BG	ST36-SFG	ST36-SG	36"	2	7.25	235#
ST48-BG	ST48-SFG	ST48-SG	48"	3	13.63	285#
ST72-BG	ST72-SFG	ST72-SG	72"	4	24.75	385#
ST96-BG	ST96-SFG	ST96-SG	96"	5	32.17	485#

STAINLESS STEEL INTERIOR MODELS

BLACK VINYL-CLAD MODEL	STAINLESS FRONT & SIDES MODEL	ALL STAINLESS EXTERIOR MODEL	LENGTH	DIVIDER RACKS	CASE CAP. BOTTLES	WGT
ST24-B	ST24-SF	ST24-S	24"	1	4.83	200#
ST36-B	ST36-SF	ST36-S	36"	2	7.25	235#
ST48-B	ST48-SF	ST48-S	48"	3	13.63	285#
ST72-B	ST72-SF	ST72-S	72"	4	24.75	385#
ST96-B	ST96-SF	ST96-S	96"	5	32.17	485#

ACCESSORIES

MODEL	DESCRIPTION	WT
C-4x4	Casters (set of 4), 3-3/4"	4#
C-6x4	Casters (set of 6), 3-3/4"	6#
STLS-4	Legs (set of 4), 6"	12#
STLS-6	Legs (set of 6), 6"	18#
BO/CC	Bottle opener/cap catcher	5#
STKR-24	24" Kick rail	2#
STKR-36	36" Kick rail	3#
STKR-48	48" Kick rail	4#
STKR-72	72" Kick rail	6#
STKR-96	96" Kick rail	9#
FL-24	24" Front lamination	N/A
FL-36	36" Front lamination	N/A
FL/ST-48	48" Front lamination	N/A
FL/ST-72	72" Front lamination	N/A
FL/ST-96	96" Front lamination	N/A
STBS-24	24" Slide top backsplash	4#
STBS-36	36" Slide top backsplash	6#
STBS-48	48" Slide top backsplash	8#
STBS-72	72" Slide top backsplash	12#
STBS-96	96" Slide top backsplash	16#
GT-032906	Chrome divider rack (extra)	4#

ACCESSORIES

MODEL	DESCRIPTION	WT
GT-033104	24" Bottom rack	5#
GT-036923	36" Bottom rack set	8#
GT-036924	48" Bottom rack set	8#
GT-036925	72" Bottom rack set	13#
GT-036926	96" Bottom rack set	16#
SER-1	Extend labor warranty to 1 year	N/A
CE-220/50S	Convert self-contained unit to 220V/50Hz electrical	N/A

PRODUCT INFORMATION

(see Specification Guide pages 5.1 - 5.2 for complete specs)

STANDARD FEATURES: Self-contained • Five year compressor warranty • Vertical wire partitions • Perfect exterior dimensions: 24" front to back and 24", 36", 48", 72", or 96" left to right • Foamed-in-place insulation • Six-foot grounded cord and plug provided (exits at rear) • Automatic defrost timer • Door lock(s)

ELECTRICAL: Dedicated 15 amp circuit is required • ST24 and ST36 - 115V, 1 phase, 60 Hz, 6.1 full load amps • ST48, ST72, and ST96 - 115V, 1 phase, 60 Hz, 9.3 full load amps

REFRIGERATION: ST24 and ST36 - 1/5 HP, R22 refrigerant • ST48, ST72, and ST96 - 1/3 HP, R22 refrigerant

PLUMBING: Automatic condensate evaporator. No drain connection required.





MF24-S



MF36-B2
with front lamination



MF48-B2

24" MODELS

BLACK VINYL-CLAD	STAINLESS FRONT & SIDES	ALL STAINLESS	NUMBER OF SHELVES	WEIGHT
MODEL	MODEL	MODEL		
MF24-B	MF24-SF	MF24-S	0	200#
MF24-B1	MF24-SF1	MF24-S1	1	205#
MF24-B2	MF24-SF2	MF24-S2	2	210#

36" MODELS

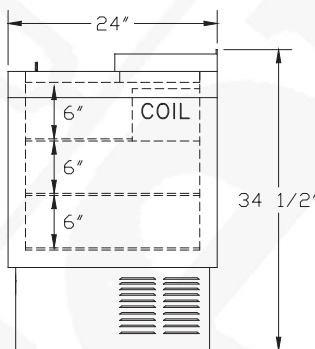
BLACK VINYL-CLAD	STAINLESS FRONT & SIDES	ALL STAINLESS	NUMBER OF SHELVES	WEIGHT
MODEL	MODEL	MODEL		
MF36-B	MF36-SF	MF36-S	0	240#
MF36-B1	MF36-SF1	MF36-S1	1	245#
MF36-B2	MF36-SF2	MF36-S2	2	250#

48" MODELS

BLACK VINYL-CLAD	STAINLESS FRONT & SIDES	ALL STAINLESS	NUMBER OF SHELVES	WEIGHT
MODEL	MODEL	MODEL		
MF48-B	MF48-SF	MF48-S	0	300#
MF48-B1	MF48-SF1	MF48-S1	1	305#
MF48-B2	MF48-SF2	MF48-S2	2	310#

ACCESSORIES

MODEL	DESCRIPTION
C-4x4	Casters (set of 4), 3-3/4"
MFLS	Legs (set of 4), 6"
MFKR-24	24" Kick rail
MFKR-36	36" Kick rail
MFKR-48	48" Kick rail
FL-24	24" Front lamination
FL-36	36" Front lamination
FL-48	48" Front lamination
SSR-24	24" Single speed rail
SSR-36	36" Single speed rail
SSR-48	48" Single speed rail
MFBS-24	24" Backsplash
MFBS-36	36" Backsplash
MFBS-48	48" Backsplash
CE-220/50S	Convert self-contained unit to 220V/50Hz electrical



Side Elevation

PRODUCT INFORMATION

(see Specification Guide page 6.1 for complete specs)

STANDARD FEATURES: Five year compressor warranty • All 22 gauge, type 304 stainless steel interior construction • Bottom rack • Two Defrost Cycles: *automatic* - occurs every six hours without affecting normal operation, *manual* - user selected for complete six-hour defrost with automatic restart.

ELECTRICAL: 115V, 1 phase, 60 Hz, 8.2 full load amps. Includes 6 foot grounded cord.

REFRIGERATION: 1/3 HP, R404A refrigerant, operating range: -15°F to 0°F.

PLUMBING: No drain connection required.

CAPACITY: 24" Model = 105*, 36" Model = 175*, 48" Model = 252* (10-oz mugs).

* Based on models with two layers of shelves