



a Standex company

ITEM: \_\_\_\_\_ PROJECT NAME: \_\_\_\_\_ DATE: \_\_\_\_\_

## SERIES '90 DUAL REFRIGERATED | NON-REFRIGERATED BAKERY CASE

MODEL  SN48-3SC  
 SN59-3SC  
 SN77-3SC



*Series '90. The ultimate merchandiser with advanced styling for maximum visual appeal. Cases are available in lengths of 48", 59", and 77". Designed for continuous case line-ups.*

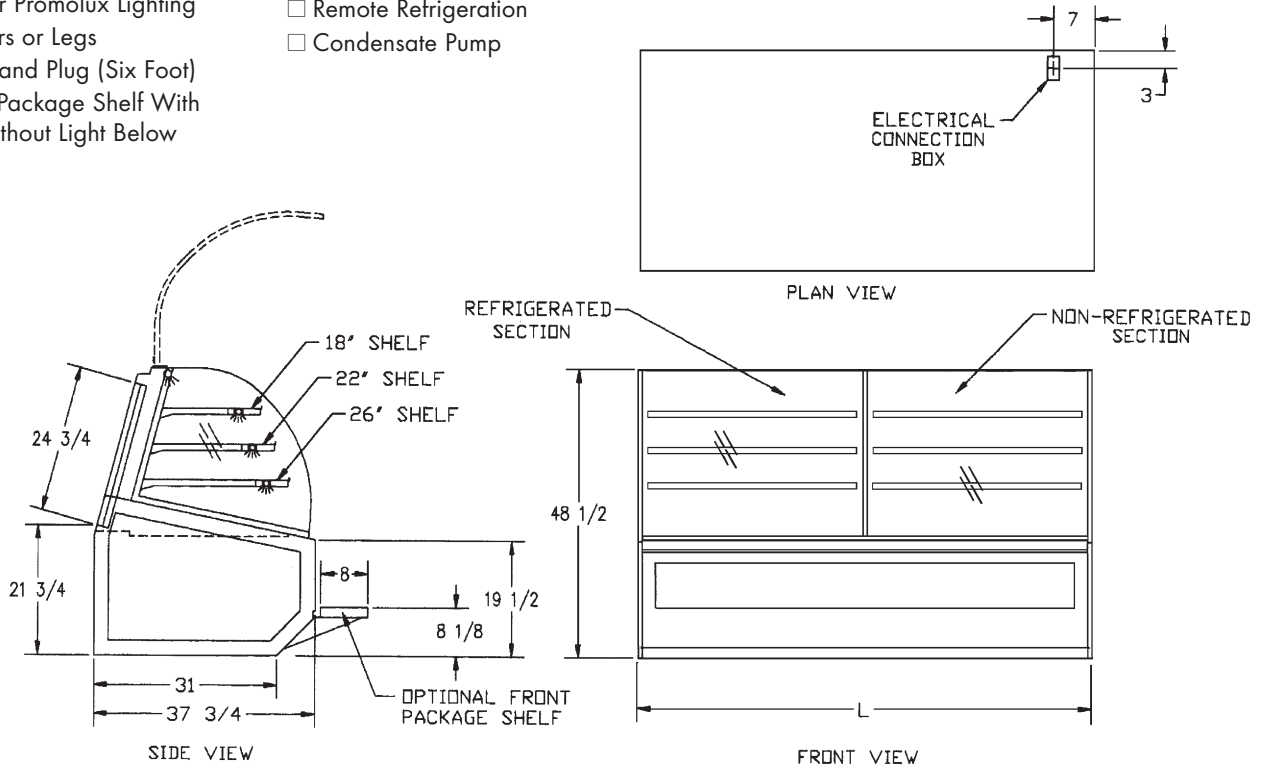
### STANDARD FEATURES

- One-piece base. Left-side refrigerated, right-side non-refrigerated.
  - Adjustable white cantilevered wire shelves. Shelves are adjustable up and down and can also be tilted.
  - Lift-up pneumatic, cylinder-assisted, double-curve tempered front glass.
  - Four-point leveling system.
  - Removable sliding rear doors, shelf lights, shelf supports, and shelves.
  - Glass ends and two rear doors. Rear doors are sloped for product access.
  - Octron top light and shelf lights. Lights are shielded and independently wired.
  - All-welded base construction with a choice of six standard laminates on base. Other color laminates are optional.
  - Base trim: specify white, black, or stainless.
  - End glass trim: specify white or black.
  - Easily accessible control panel with main power switch, light control, digital thermometer, and adjustable temperature control.
  - Double-bend tempered front glass reduces glare from outside lighting.
  - Case height is only 48" high, allowing better interaction between the customer and the sales clerk.
  - White display deck.
- #### Refrigerated Side
- Condensate evaporator provided for a totally self-contained system.
  - Average case temperature of 38°F to 40°F is maintained without condensation on the front glass.
  - Over-sized coil and low-velocity fan system maintains high humidity and product freshness.
  - Pull-out condensing unit for quick and easy service.
  - From the customer side, the refrigerated side is on the left.
  - R134A Refrigerant.

# SERIES '90 DUAL REFRIGERATED | NON-REFRIGERATED BAKERY CASE

## OPTIONAL ACCESSORIES:

- Special Base Finish
- Base Trim Specify White, Black, or Stainless
- End Glass Trim Specify White or Black
- Black or Stainless Steel Interior
- Glass, Black, or Chrome Shelves in Lieu of White
- LED or Promolux Lighting
- Casters or Legs
- Cord and Plug (Six Foot)
- Front Package Shelf With or Without Light Below
- Reflective End Glass
- Mirrored Interior Ends With Laminated Exterior
- Reflective Rear Doors
- Rear Wrapping Board
- Front Glass and Rear Door Locks
- Top Service Shelf (Stainless Steel or Glass)
- Remote Refrigeration
- Condensate Pump



## SPECIFICATIONS:

Model	Dimensions L W H	Shipping Weight (lbs)	Capacity (Bakery Pans)	Self-Contained 120/60/1	Remote 120/60/1
<input type="checkbox"/> SN48-3SC	48 1/4" x 37 3/4" x 48 1/2"	750	4 (18" x 26") 4 (18" x 12")	1/3 HP • 8 AMPS	12 AMPS
<input type="checkbox"/> SN59-3SC	59 1/4" x 37 3/4" x 48 1/2"	865	4 (9" x 26") 8 (18" x 26")	1/3 HP • 9 AMPS	12 AMPS
<input type="checkbox"/> SN77-3SC	77 1/4" x 37 3/4" x 48 1/2"	1,075	8 (18" x 26") 12 (18" x 12")	1/3 HP • 10 AMPS	12 AMPS

- Cases are designed to operate in a maximum environment of 75° ambient and 55% relative humidity.
- Due to continuing engineering improvements, specifications are subject to change without notice.



*The Signature of Quality*

**FEDERAL INDUSTRIES**  
A Standex Company

215 FEDERAL AVENUE, BELLEVILLE, WISCONSIN 53508-9201

PHONE: 800-356-4206

EMAIL: geninfo@federalind.com

FAX: 608-424-3234

WEBSITE: www.federalind.com

