



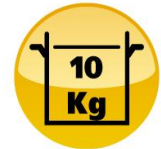
JUNIOR SERIES



Mixer

Whisks

Ricer / Foodmill



1.25 / 6.5 gal.

0.25 / 1.25 gal.

22 lbs



TECHNICAL DATA

OUTPUT MAX	270 W
SPEED	0 to 11,000 R.P.M.
VOLTAGE	115V ou 230V
MOTOR BLOCK LENGTH	280 mm / 11"
MOTOR BLOCK DIAMETER	94 mm / 3,7"
ACTUAL WEIGHT - SHIPPING WEIGHT	1.9 kg / 4.2 lbs - 2.3 kg / 5.1 lbs
TOOLS	DETACHABLE

Junior motor block

Ref. AC100



ADVANTAGES

- You can adapt several accessories to the Junior motor block. Sold separately or by package, this innovative solution replaces many machines and frees up work surface space.
- Lightweight, sturdy and handy
- Safety button
- Double insulation
- Variable speed as standard
- Stainless steel mixer tube, guard and whisks for easy cleaning and perfect hygiene
- Titanium-plated blade easy to remove
- Detachable tools for easy cleaning and maintenance
- XL mixer tool 300 mm: allows to work in deeper pots.
- Ricer tool: exclusive to Dynamic



CAPACITY	5 – 25 litres
LENGHT	225 mm / 9"

Junior mixer tool detachable 225 mm

Ref. AC101



CAPACITY	5 – 25 litres
LENGHT	300 mm / 11.8"

Junior mixer tool detachable 300 mm

Ref. AC105



CAPACITY	1 – 5 litres
WHISKS LENGHT	185 mm / 7.3"

Junior Whisk tool

Ref. AC102



CAPACITY	3 – 10 kg
LENGHT	200 mm / 7.9"

Junior Ricer tool

Ref. AC103



CAPACITY	0,8 litres
HEIGHT	175 mm / 6.9"
DIAMÈTRE	165 mm / 6.5"
POIDS	800 g / 1.8 lbs

Cutter bowl

Ref. AC104



MAINTENANCE

Clean the accessories by passing them under the faucet.

Mixer tools: put the tube with the blade protector in clear water and start the machine for 3 seconds or more to clean the inside of the blade protector.

Whisks tool: dismantle whisks from their attachments by pushing strongly on the cups, then you can securely rinse the whisks under running water.

Wash the motor block with a sponge or with a slightly damp cloth.

Never clean this machine with a water jet spray.

USE

Mixer: Indispensable for the preparation of soups, salad dressings, gravies, sauces, mayonnaise, refried beans and many other applications.

Whisks: For easy preparation of batters, creams, mousseline sauces and whipped egg whites.

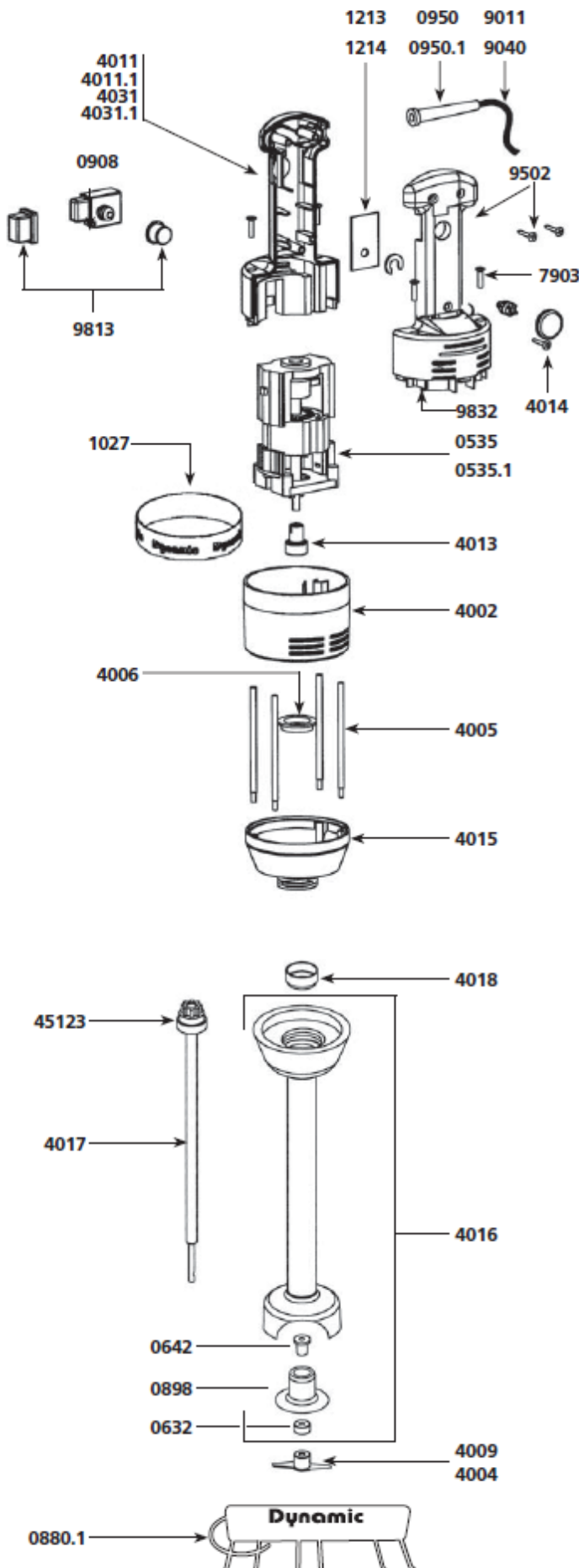
Foodmill/ricer: Ideal for making purees, smooth vegetable creams, compotes, etc.

Cutter: Allows you to grind, mix, chop vegetables, garlic, onions, herbs, parsley, nuts, minced meat, Parmesan and making short crust pastry or bread dough.



TECHNICAL SHEET

JUNIOR PLUS AND JUNIOR COMBI MIXERS



Power Unit

Parts list

Code

Stator 230 V	0535
Stator 115 V	0535.1
Wall bracket	0880.1
Non-locking switch	0908
Strain relief 230 V	0950
Strain relief 115 V	0950.1
Dynamic label	1027
Id label (Junior Plus) 230V	1084
Id label (Junior Plus) 115V	1085
Id label (Junior Combi) 230V	1086
Id label (Junior Combi) 115V	1087
Speed variator 230V	1213
Speed variator 115V	1214
Upper motor housing	4002
Braces (4)	4005
Ball bearing ring	4006
Complete handle w/ power cord 230V	4010
Complete handle w/ power cord 115V	4010.1
Lower half handle w/ Junior Plus label 230V	4011
Lower half handle w/ Junior Plus label 115V	4011.1
Filtering capacitor	4012
Coupling	4013
Speed variator knob	4014
Lower aluminium motor housing	4015
Complete handle w/ power cord 230V	4030
Complete handle w/ power cord 115V	4030.1
Lower half handle w/ Junior Combi label 230V	4031
Lower half handle w/ Junior Combi label 115V	4031.1
Carbon brushes (2) 230 V	4050
Carbon brushes (2) 115 V	4050.1
Brace screws (4)	7903
Power cord 230 V	9011
Power cord 115 V	9040
Power cord (Australian)	9066
Power cord (UK)	9067
Handle screws (3)	9502
Switch protector	9813
Upper half handle Junior Plus & Junior Combi	9832
Complete motor block (see machine catalogue)	AC100

Complete foot assembly

Parts list

Code

Waterproof seal	0632
Self-lubricating ring	0642
Bearing only	0898
Cutter blade	4004
Emulsifying blade	4009
Foot assembly with bearing	4016
Kit w/ shaft lower ball bearing and coupling	4017
Ball bearing ring	4018
Coupling hub	45123
Complete Junior foot (see machine catalogue)	AC101

JUNIOR COMBI MIXER

Whisk tool

Parts list	Code
Ball bearing	0601
Pins 3 x 10	0638
Pins 3 x 14	0745
Open head locking washer (unit)	0766
Entry gear	0837A
Lower motor whisk housing	4019
Equipped upper shaft (complete)	4020
Plate w/ seals and screws	4021
Holder assembly screws (4)	4022
Reduction gear assembly	4025
Middle gear & shaft	9420
Equipped output axle w/ 2 gears+pins	9421
Holder assembly w/ 3 self-lubricating rings	9422
Whisk tool (2)	9424
Coupling hub	45123
Upper driving shaft	089947
Complete Junior Whisk tool (see machine catalogue)	AC102

