



WWW.DYNAMICMIXERS.COM

SENIOR SERIES



Detachable equipment



Mixer

Whisks

Ricer / Foodmill Cutter bowl



5 / 10 gal.



1.25 / 5 gal.



66 lbs

1.25 gal.

TECHNICAL DATA

ADVANTAGES

OUTPUT MAX	350 W
SPEED	0 to 9,500 R.P.M.
VOLTAGE	115 V or 230 V
MOTOR BLOCK LENGTH	300 mm / 11.8"
DIAMETER	97 mm / 3.8"
TOOLS	DETACHABLE

- You can adapt several accessories to the BM 250 motor block. Sold separately or by package, this innovative solution replaces many machines and frees up work surface space
- Ideal for medium size applications
- Top quality materials
- Safety button
- Variable speed as standard
- Double insulation
- Stainless steel mixer tube, guard and whisks for easy cleaning and perfect hygiene
- Titanium-plated blade easily dismantled without any special tool
- Detachable tools for easy cleaning and maintenance
- Ricer tool: exclusive to Dynamic



Motor block BM 250

Ref. AC005



CAPACITY	20 – 40 litres
LENGTH	300 mm / 11.8"

Mixer tool M 250

Ref. AC006



CAPACITY	20 – 40 litres
LENGTH	400 mm / 15.7"

XL Mixer tool

Ref. AC016



Allows to work in deeper pots.

CAPACITY	5 – 20 litres
WHISK LENGTH	205 mm / 8.1"

Whisk tool F 250

Ref. AC007



CAPACITY	30 kg
LENGTH	300 mm / 11.8"
GRID DIAMETER	110 mm / 4.3"

Ricer tool

Ref. AC004



CAPACITY	5 litres
HEIGHT	600 mm / 23.6"
DIAMETER	220 mm / 8.7"
ACTUAL WEIGHT – SHIPPING WEIGHT	2,4 kg / 5.3 lbs– 2,8 kg / 6.2 lbs

Complete stainless steel cutter bowl

Ref. AC055

Standard blade

Serrated blade



MAINTENANCE

Clean the accessories by passing them under the faucet.

Wash the motor block with a sponge or with a slightly damp cloth.

Never clean this machine with a water jet.

USE

Mixer: Indispensable for the preparation of soups, salad dressings, gravies, sauces, mayonnaise, refried beans and many other applications.

Whisks: For easy preparation of batters, creams, mousseline sauces and whipped egg whites.

Foodmill/ricer: Ideal for making purees, smooth vegetable creams, compotes, etc.

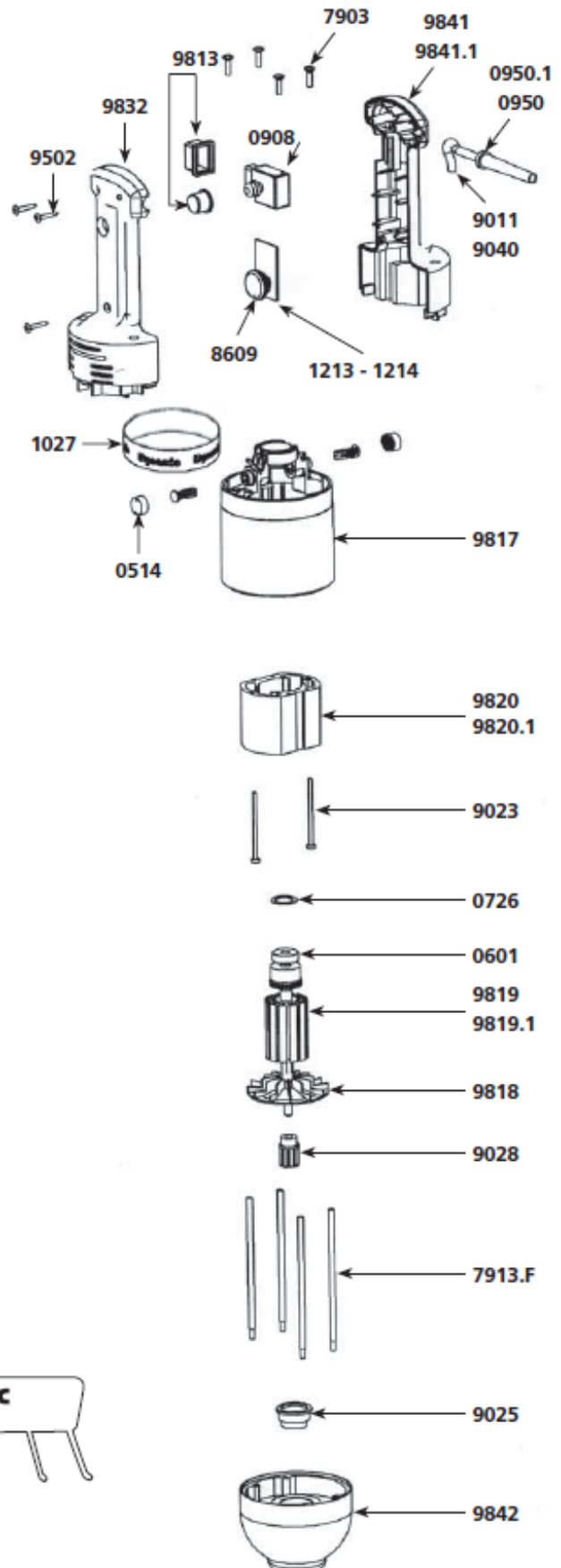
Cutter: Allows you to grind, mix, chop vegetables, garlic, onions, herbs, parsley, nuts, minced meat, Parmesan and making short crust pastry or bread dough.



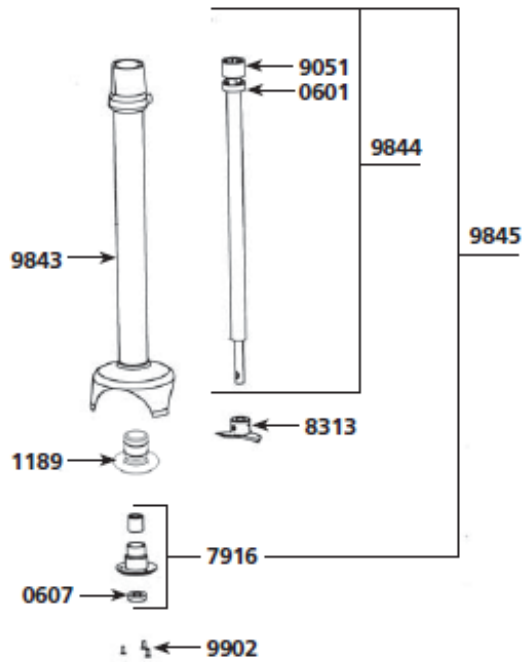
TECHNICAL SHEET

PMDH / PMF 250 MOTOR BLOCK

Parts list	Code
Carbon brushes (2)	0514
Ball bearing	0601
Squeezing washer	0726
Wall bracket	0880
Non-locking switch	0908
Capacitor	0909
Strain relief 230 V	0950
Strain relief 115V	0950.1
Warning label	1017
Dynamic label	1027
Label w/ serial number 230 V	1071
Label w/ serial number 115 V	1072
Variable speed control board 230 V	1213
Variable speed speed control board 115 V	1214
Brace screws (4)	7903
Braces (4)	7913.F
Variable speed control knob	8609
Power cord 230 V	9011
Stator screws (2)	9023
Self-lubricating ring	9025
Coupler for armature	9028
Power cord 115 V	9040
Power cord (UK)	9067
Handle screws (3)	9502
Switch protector	9813
Upper motor casing	9817
Fan	9818
Rotor w/ o coupling 230 V	9819
Rotor w/o coupling 115 V	9819.1
Stator 230 V w/ carter, carbon brushes holders	9820
Stator 115 V w/ carter, carbon brushes holders	9820.1
Upper half handle	9832
Complete handle 230 V	9840
Complete handle 115 V	9840.1
Lower half handle w/ label 230 V	9841
Lower half handle w/ label 115 V	9841.1
Aluminium carter + ball bearing	9842
BM 250 Motor block (see machine catalogue)	AC005



PMF - PMDH 250 mixer tool



Parts list

Code

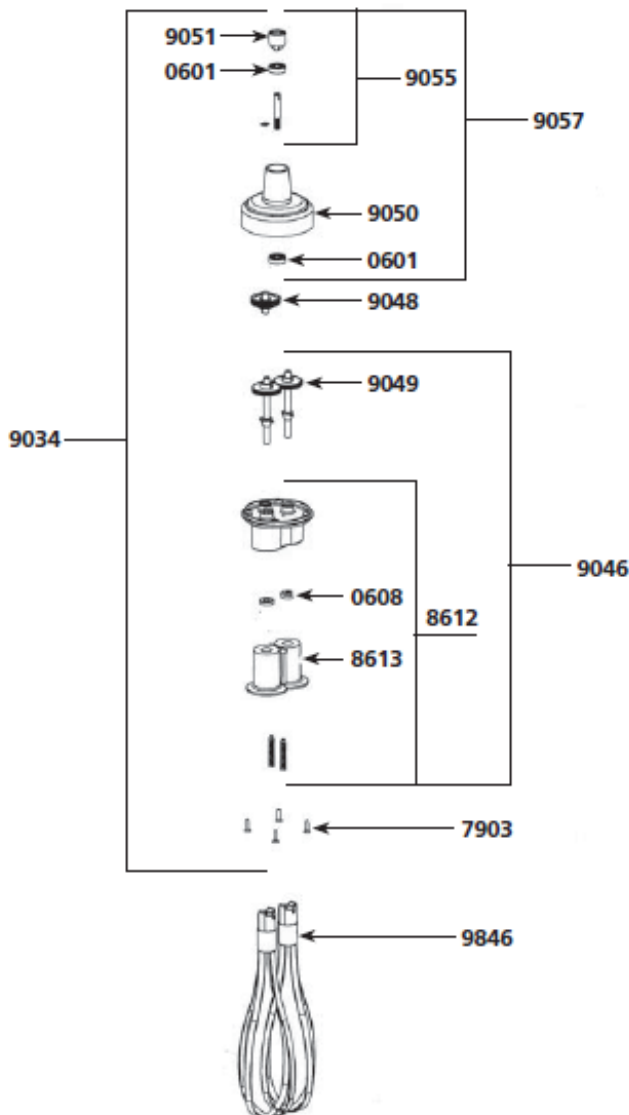
Ball bearing	0601
Waterproof seal	0607
Bearing holder + seal	1189
Lower ball bearing assembly (w/ o screws)	7916
Cutter blade (w/ screw)	8313
Coupling casing + pins	9051
Tube assembly + bearing	9843
Shaft & coupling sleeve	9844
Shaft, lower bearing & cutter assembly	9845
Lower bearing screws (3)	9902
M 250 Complete Mixer tool (see machine catalogue)	AC006

PMF 250 whisk tool

Parts list

Code

Ball bearing	0601
Waterproof seal for whisk	0608
Pin 3 X 20	0744
Pin 3 X 14	0745
Brace screws (4)	7903
Holder + plastic ejector + seal	8612
Plastic ejectors (pair)	8613
Reduction gear assembly	9034
Lower casing w/ o middle gear	9046
Central double gear & shaft	9048
Single gear (2) + pin	9049
Upper plastic casing	9050
Coupling casing + pin	9051
Equipped upper shaft	9055
Complete upper casing	9057
Whisks (2)	9846
F 250 Complete whisk tool (see machine catalogue)	AC007



DYNACUTTER

Parts list	Code
Ball bearing	0601
Base screws (4)	9014
Coupling + pin	9051
Upper shaft assembly	9055
Complete adaptator	9070
Cover	9071
Knife assembly	9072
Dynacutter Bowl	9073
Knife cone support	9074
Inner assembly + ball bearing	9075
Bowl pivot	9076
Handle	9077
Handle screws	9078
Adaptator + seal + sticker	9080
Output shaft w/ gear	9081
Middle gear + shaft	9082
Complete adaptator base	9083
Axle 8x40	089948
Inferior blade	089949
Inferior serrated blade	089949D
Superior blade	089950
Superior serrated blade	089950D

