

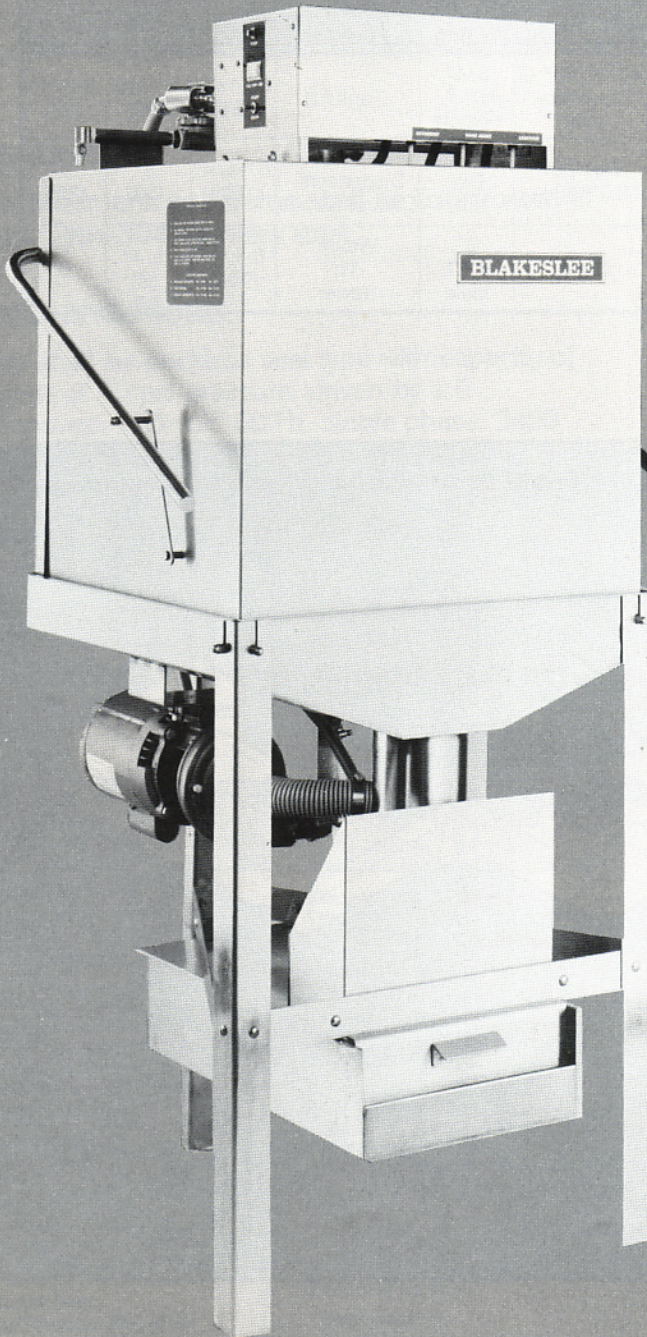


BLAKESLEE

MODEL D-9

DISHWASHER

LOW ENERGY, CHEMICAL SANITIZING



- Quality
- Performance
- Dependability
- Straight thru or corner operation
- Automatic chemical dispensers included

The D-9 dishwashing machine was designed to meet the ever changing needs of the food service industry. Simple operation, economical, reduced energy consumption. The D-9 is the answer. It's an automatic, door type, low temperature dishwasher with timed wash, flush and rinse. The same model for left to right, right to left or corner operation. Built-in dispensers for chlorine, detergent and rinse aid. Designed for easy cleaning and easy maintenance, maximum performance and optimum dependability.

D-9 Low Energy - Chemical Sanitizing Dishwasher

Outstanding Features

Capacity

36 racks per hour (90%); 40 racks per hour (100%).

Pump and Motor

Capacity 75 GPM at 15 PSI pressure. Motor 3450 RPM - 115 V, 60 Hz., 1 phase.

Water Consumption

1.7 gallons per rack; 65 gallons per hour (For 36 racks).

Wash and Rinse Temperatures

Minimum 120° F - Recommended 140° F.

Operating Cycle

Total cycle - 90 seconds. (45 seconds wash, 15 seconds flush, 30 seconds rinse)

Connections

3/4" water inlet, 2" drain. Water supply 120° F minimum 10 PSI recommended minimum flow pressure.

Controls

- a) Rocker switch for initial fill and power on - off.
- b) Push button for start.
- c) Toggle switch for dispenser priming and draining of tank.

Dispensers

Dispensers for chlorine, detergent and rinse aid mounted on top of dishwasher inside of main control box and controlled by adjustable timer.

Service

Should you need service, Blakeslee has a large network of authorized service centers strategically located throughout the United States and Canada.



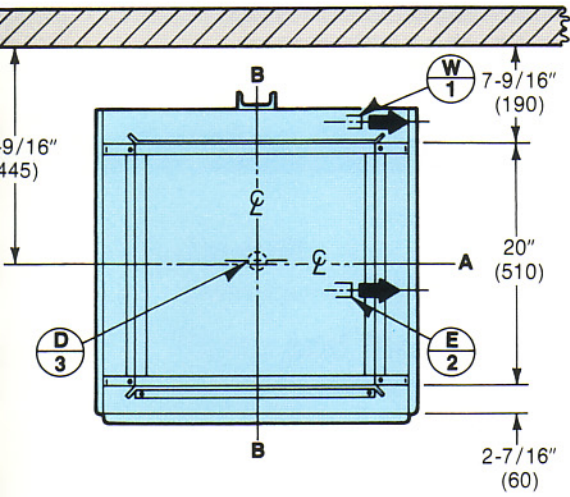
BLAKESLEE

1844 South Laramie Avenue
Chicago, IL 60650
Phone: (708) 656-0660
FAX: (708) 656-0017

BLAKESLEE

66 Crockford Boulevard
Scarborough, Ontario, Canada M1R 3C3
Phone: (416) 751-2625
FAX: (416) 751-8539

MODEL D-9 INSTALLATION INFORMATION

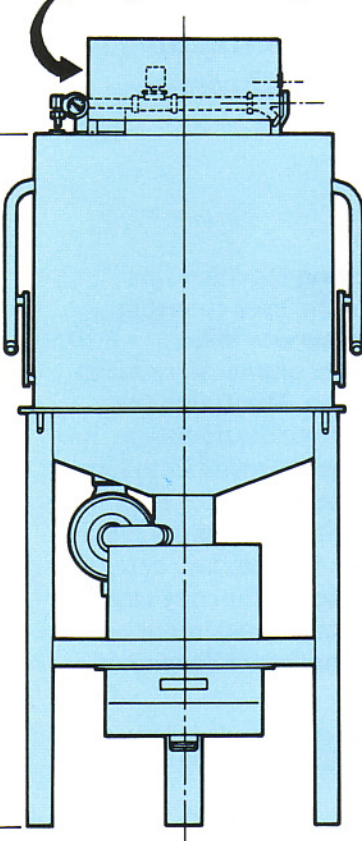


Straight Through Installation

Mk. No.	Service Connection	Fitting	Function	Dimensions From		
				Floor Line	Center Lines	
				A - A	B - B	
W 1	140° F. 60° C. Hot Water Inlet	3/4" N.P.T. Female	Tank Fill	59-1/2" (1510)	11-7/16" (290)	8-3/4" (22)
E 2	Electric 18.0 Amps.	7/8" (22) Dia. Hole	Pump Motor, Dispensers, Control Circuit	61-1/4" (1555)	2" (50)	8" (205)
D 3	Drain	2" N.P.T. Male	Waste To Sewer	6-1/2" (165)	1/4" (6)	0

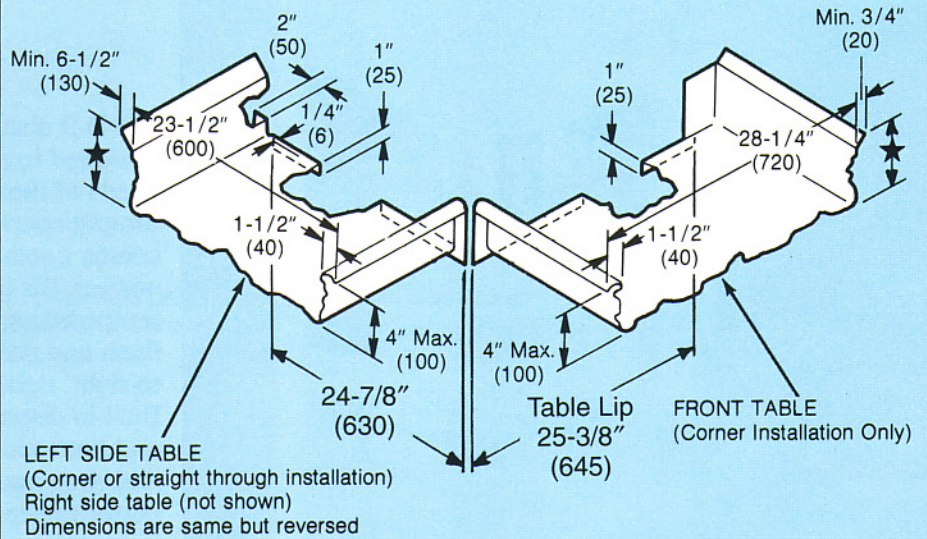
CONTROLS

(always on left side)



Front View

Table Dimensions



★ As required

Specifications:

Design

Dishwasher shall be dual purpose, corner or straight through model. The door shall be one piece, three-way opening with counterbalance spring. Dishwasher shall have built-in dispensers for automatic dispensing of sanitizer, rinse aid, and detergent liquids. Dishwasher shall have timing device to provide automatic controls for wash, flush, fill and rinse cycle. Dishwasher shall have electrically operated fill, drain and dispenser priming function. Dishwasher shall be listed by N.S.F., U.L. and C.S.A. Total energy consumption shall not exceed 1.5 kw per hour. Water consumption shall not exceed 75 gallons per hour.

Construction

Dishwasher tank and frame shall be constructed of 14 g a. Type 304 stainless steel.

Pump and Motor

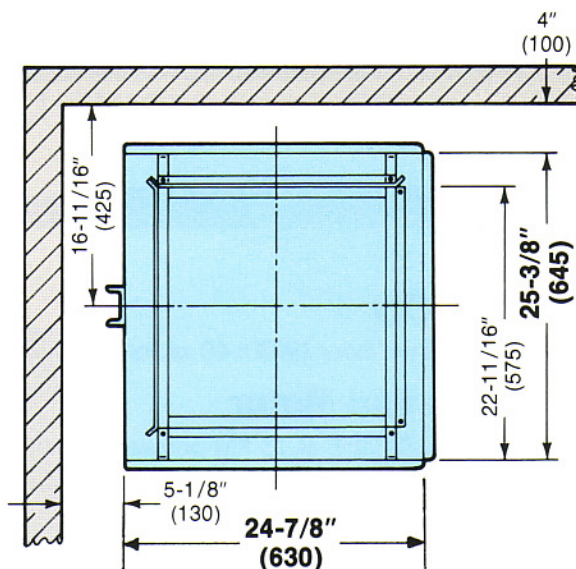
Pump shall be packless seal type with capacity of 75 gpm of 15 psi pressure, driven by 1.0 horsepower, 115 volt, 60 Hz, single phase, 3450 rpm, air cooled motor having permanently lubricated bearings.

Wash and Rinse

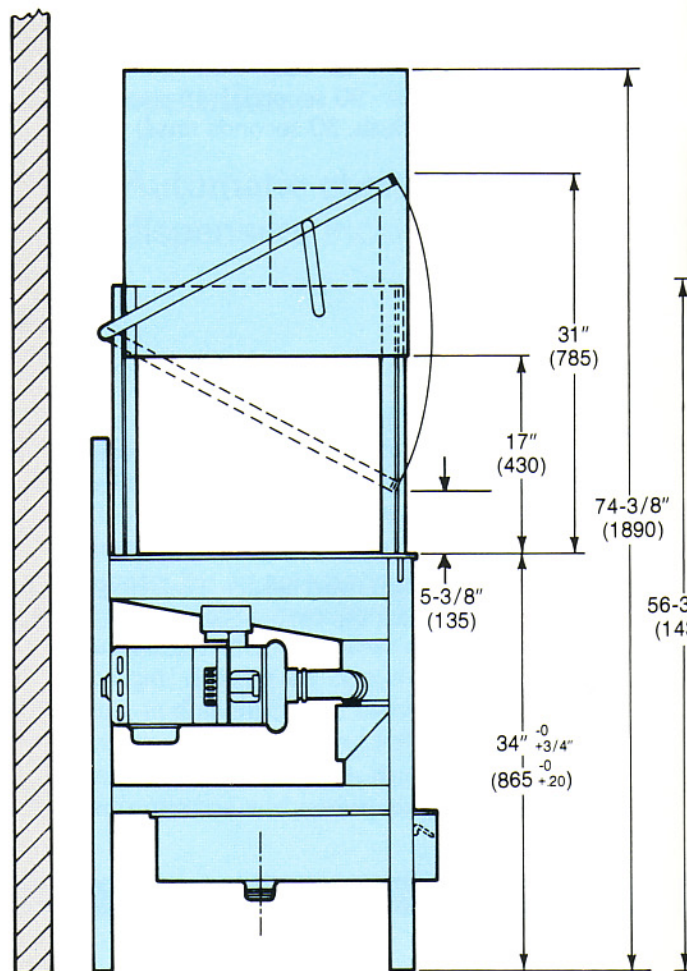
Upper and lower wash-rinse arms shall be revolving type, easily removable and interchangeable. The arms and nozzles shall be constructed of stainless steel.

Model	Volts	Phase	Approximate Total Load Amps
D-9	115	1	13

Operating Capacity 90%		Dimensions (Nominal)	
Racks per hour	36	Depth	27"
Dishes per hour	950	Width	25"
Glasses per hour	950	Height 56" & Box	68"
		Standard Table Height	34"
Operating Cycle		Maximum Clearance for Dishes	17"
Wash Time-Sec.	45	Racks	
Flush Time-Sec.	15	Dish: 20" x 20"	Optional
Rinse Time-Sec.	30	Glass & Silver: 20" x 20"	Optional
Total Cycle-Sec.	90	Chlorine	
Tank Capacity-Gallons	1.7	Concentration	50 ppm-70 ppm
Wash Pump Capacity		Shipping Weight	
Gal. per min.	75	Basic Models-lbs.	300
Water Requirements (NSF Rated)		Electrical Rating	
Inlet Temperature-°F		Wash-Rinse	
min/recom.	120/140	Pump Motor Horsepower	1
Gal. per hour	65		
Flow Pressure PSI (Fill)	10		
Flow Rate GPM	10.5		
Inlet-IPS	3/4"		
Drain-IPS	1-1/2"		



Corner Installation
(right side must always face wall)



Side View

NOTE: Dimensions in millimeters show in parentheses