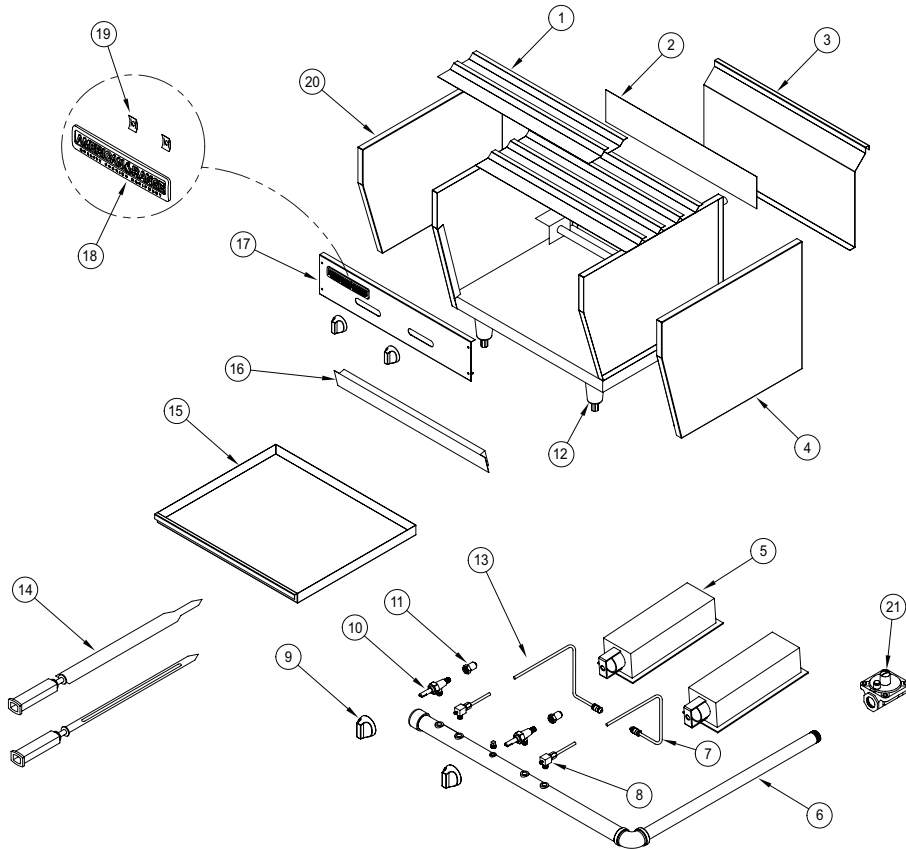
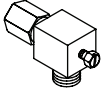
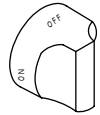
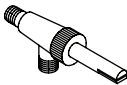
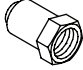




# AROB



ITEM NO.	PART NO.	DESCRIPTION	PRICE
5	A14050	Burner, Infrared 19-3/4" x 8" AROB	\$ 576
7	A29232	Pilot, Tip Right Assembly Single AROB	30
8	A29300	Valve, Pilot Elbow Adjustable 10418 1/8NPT 2/16 CC	15
9	A32001	Knob, Gas On/Off Glossy Black Flat Down	17
10	A80109	Valve, Gas Manual On/Off UL 10419, AR, ARKB, ARRB, AECB	30
11	A29003	Orifice Hood, #53 1/2" Brass Flat Head/MSD LPG Gas AROB	3
	A29012	Orifice Hood, #43 1/2" Brass 11043 AROB Nat Gas	3
12	A35001	Leg, 6" Cone 3" Adjustable Bullet Chrome Plated	48
13	A29231	Pilot, Tip Left Assembly Single AROB	30
14	A31043	Skewer, (Shish Kabob) w/Handle Heavy Duty Stainless ARKB	144
	A31044	Skewer, (Lule Kabob) w/Handle Heavy Duty Stainless ARKB	192
18	A38000	Name Plate, American Range 8" 10499 Quality Commercial Chrome	24
21	A44003	Nut, Speed #6 Push Black 10601	.60
	A80110	Valve, Pressure Regulator 3/4 10480 Nat Gas Set 5	40
	A80011	Valve, Pressure Regulator 3/4 10481 LPG Gas Set 10.0	40

All prices subject to change without notice.

8  90° SINGLE PILOT ADJUSTABLE VALVE	9  BLACK ON/OFF KNOB	10  GAS VALVE	11  ORIFICE HOOD	18  AMERICAN RANGE NAME PLATE	19  SPEED NUT
--	--	--	---	---	--